

This document was generated on 05/31/2010

PLEASE CHECK WWW.MOLEX.COM FOR LATEST PART INFORMATION

**Part Number:** 0015445178  
**Status:** Active  
**Overview:** cgrid\_sl\_products  
**Description:** 2.54mm (.100") Pitch C-Grid® Receptacle, Through Hole, Dual Row, High Profile, Vertical, High-Temperature, 78 Circuits

**Documents:**

[3D Model](#) [Product Specification PS-70181 \(PDF\)](#)  
[Drawing \(PDF\)](#) [RoHS Certificate of Compliance \(PDF\)](#)  
[Packaging Specification \(PDF\)](#)

**Agency Certification**

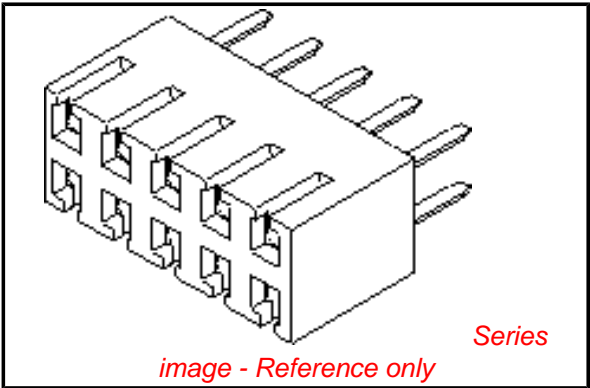
CSA LR19980  
UL E29179

**General**

Product Family PCB Receptacles  
Series 71850  
Application Board-to-Board  
Overview cgrid\_sl\_products  
Product Name C-Grid®

**Physical**

Circuits (Loaded) 78  
Circuits (maximum) 78  
Color - Resin Black  
Durability (mating cycles max) 50  
Flammability 94V-0  
Glow-Wire Compliant No  
Guide to Mating Part No  
Keying to Mating Part None  
Lock to Mating Part No  
Material - Metal Phosphor Bronze  
Material - Plating Mating Gold  
Material - Plating Termination Tin  
Material - Resin High Temperature Thermoplastic  
Number of Rows 2  
Orientation Vertical  
PC Tail Length (in) 0.120 In  
PC Tail Length (mm) 3.05 mm  
PCB Locator No  
PCB Retention None  
PCB Thickness Recommended (in) 0.054 In, 0.071 In  
PCB Thickness Recommended (mm) 1.37 mm, 1.80 mm  
Packaging Type Tray  
Pitch - Mating Interface (in) 0.100 In  
Pitch - Mating Interface (mm) 2.54 mm  
Pitch - Term. Interface (in) 0.100 In  
Pitch - Term. Interface (mm) 2.54 mm  
Plating min: Mating (µin) 30  
Plating min: Mating (µm) 0.75  
Plating min: Termination (µin) 75  
Plating min: Termination (µm) 1.875  
Polarized to Mating Part No  
Polarized to PCB No  
Stackable No



**EU RoHS**  
**ELV and RoHS**  
**Compliant**  
**REACH SVHC**  
**Contains SVHC: No**  
**Halogen-Free**  
**Status**  
**Not Reviewed**

**China RoHS**



**Need more information on product environmental compliance?**

Email [productcompliance@molex.com](mailto:productcompliance@molex.com)  
For a multiple part number RoHS Certificate of Compliance, [click here](#)

Please visit the [Contact Us](#) section for any non-product compliance questions.

**Search Parts in this Series**  
71850Series

**Mates With**  
8624 , 70203 , 70246 Straight Header,  
70247 Right Angle Header, 70287 , 70289  
, 70227 , 70567 , 70280 , 70524 , 70260 ,  
8723 , 70568 , 8724 , 71764 , 70229 , 70216  
, 71308

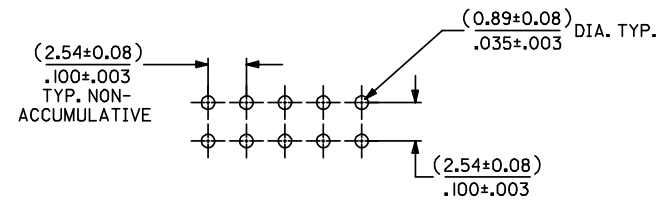
Surface Mount Compatible (SMC)	Yes	www.d9t92p66fqn.com
Temperature Range - Operating	-40°C to +105°C	
Termination Interface: Style	Through Hole	
<b>Electrical</b>		
Current - Maximum per Contact	2.5A	
Grounding to PCB	No	
Voltage - Maximum	500V AC (RMS)	
<b>Solder Process Data</b>		
Duration at Max. Process Temperature (seconds)	40	
Lead-free Process Capability	SMC & Wave Capable (TH only)	
Max. Cycles at Max. Process Temperature	3	
Process Temperature max. C	260	
<b>Material Info</b>		
Old Part Number	71850-0230	
<b>Reference - Drawing Numbers</b>		
Packaging Specification	PK-70873-0660	
Product Specification	PS-70181	
Sales Drawing	SDA-71850-0***	

This document was generated on 05/31/2010

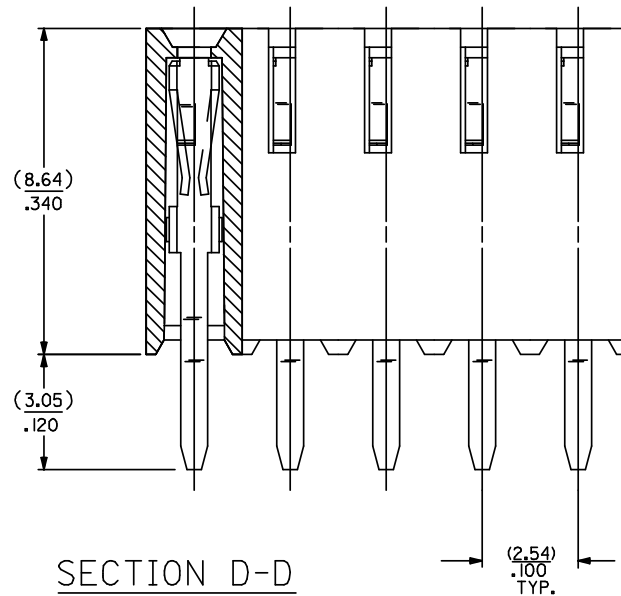
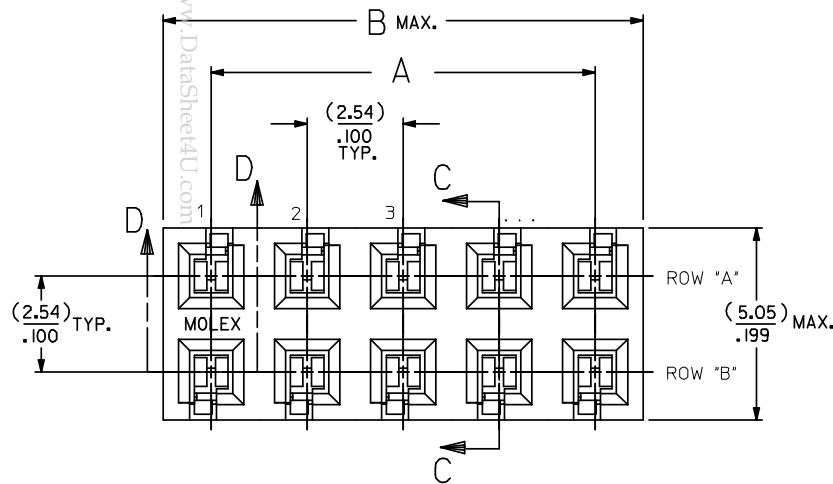
**PLEASE CHECK [WWW.MOLEX.COM](http://WWW.MOLEX.COM) FOR LATEST PART INFORMATION**

# NOTES:

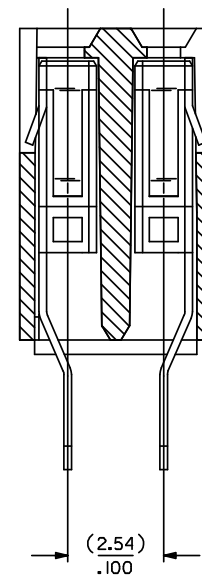
1. HOUSING MATERIAL: GLASS FILLED LIQUID CRYSTAL POLYMER, UL 94V-0, COLOR: BLACK.  
TERMINAL MATERIAL: PHOSPHOR BRONZE
2. FINISHES: SEE CHART SHEET 2.
3. REFER TO PRODUCT SPECIFICATION PS-70181.
4. PACKAGING IN TRAYS PER PK-70873-0660.
5. SEE SHEET 2 FOR CIRCUIT SIZES AND OVERALL DIMENSIONS.
6. RECOMMENDED PCB THICKNESS (1.37-1.80)/.054-.071.
7. PART COMPLIES WITH CLASS C REQUIREMENTS OF COSMETIC SPECIFICATION PS-45499-002.



RECOMMENDED P.C. BOARD HOLE LAYOUT  
SCALE 4:1



SECTION D-D



SECTION C-C

REMOVE 71850-0232				DESCRIPTION	QUALITY SYMBOLS	GENERAL TOLERANCES (UNLESS SPECIFIED)			DIMENSION STYLE		SCALE		DESIGN UNITS		THIRD ANGLE PROJECTION		
EC NO: UCP2009-0115						▽=0 ▽=0				MM/IN				INCH			
DRWNG: GAVILL 2008/07/22										DRAWN BY		DATE		TITLE			
CHKD: WK/PPR 2008/07/25										CHECKED BY		DATE					
APPR: FSM/TH 2008/07/28										APPROVED BY		DATE					
						ANGULAR ±1/2°			WAZ		1988/02/29		MOLEX		MOLEX INCORPORATED		
						DRAFT WHERE APPLICABLE MUST REMAIN WITHIN DIMENSIONS			MATERIAL NO.		DOCUMENT NO.				SHEET NO.		
									SEE TABLE		SDA-71850-0***				1 OF 2		
E2				REV					SIZE		C				THIS DRAWING CONTAINS INFORMATION THAT IS PROPRIETARY TO MOLEX INCORPORATED AND SHOULD NOT BE USED WITHOUT WRITTEN PERMISSION		

