

# User's Guide

W1942S  
W2042S  
W2242S

www.DataSheet4U.com

**M**ake sure to read the **Important Precautions** before using the product.  
Keep the User's Guide(CD) in an accessible place for future reference.

**S**ee the label attached on the product and give the information to your  
dealer when you ask for service.



**This unit has been engineered and manufactured to ensure your personal safety, however improper use may result in potential electrical shock or fire hazards. In order to allow the proper operation of all safeguards incorporated in this display, observe the following basic rules for its installation, use, and servicing.**

## On Safety

Use only the power cord supplied with the unit. In case you use another power cord, make sure that it is certified by the applicable national standards if not being provided by the supplier. If the power cable is faulty in any way, please contact the manufacturer or the nearest authorized repair service provider for a replacement.

The power supply cord is used as the main disconnection device. Ensure that the socket-outlet is easily accessible after installation.

Operate the display only from a power source indicated in the specifications of this manual or listed on the display. If you are not sure what type of power supply you have in your home, consult with your dealer.

Overloaded AC outlets and extension cords are dangerous. So are frayed power cords and broken plugs. They may result in a shock or fire hazard. Call your service technician for replacement.

Do not Open the Display.

- There are no user serviceable components inside.
- There are Dangerous High Voltages inside, even when the power is OFF.
- Contact your dealer if the display is not operating properly.

To Avoid Personal Injury :

- Do not place the display on a sloping shelf unless properly secured.
- Use only a stand recommended by the manufacturer.
- Do not drop an object on or apply impact to the product. Do not throw any toys or objects on the product screen.

It can cause injury to human, problem to product and damage the display.

To Prevent Fire or Hazards:

- Always turn the display OFF if you leave the room for more than a short period of time. Never leave the display ON when leaving the house.
- Keep children from dropping or pushing objects into the display's cabinet openings. Some internal parts carry hazardous voltages.
- Do not add accessories that have not been designed for this display.
- When the display is to be left unattended for an extended period of time, unplug it from the wall outlet.
- In the presence of thunder and lightning, never touch the power cord and signal cable because it can be very dangerous. It can cause electric shock.

## On Installation

Do not allow anything to rest upon or roll over the power cord, and do not place the display where the power cord is subject to damage.

Do not use this display near water such as near a bathtub, washbowl, kitchen sink, laundry tub, in a wet basement, or near a swimming pool.

Displays are provided with ventilation openings in the cabinet to allow the release of heat generated during operation. If these openings are blocked, built-up heat can cause failures which may result in a fire hazard. Therefore, NEVER:

- Block the bottom ventilation slots by placing the display on a bed, sofa, rug, etc.
- Place the display in a built-in enclosure unless proper ventilation is provided.
- Cover the openings with cloth or other material.
- Place the display near or over a radiator or heat source.
- Main power breaker is the power cord and this breaking device must be located at a location where it is easy to operate.

Do not rub or strike the Active Matrix LCD with anything hard as this may scratch, mar, or damage the Active Matrix LCD permanently.

Do not press the LCD screen with your finger for a long time as this may cause some afterimages.

Some dot defects may appear as Red, Green or Blue spots on the screen. However, this will have no impact or effect on the display performance.

If possible, use the recommended resolution to obtain the best image quality for your LCD display. If used under any mode except the recommended resolution, some scaled or processed images may appear on the screen. However, this is characteristic of the fixed-resolution LCD panel.

## On Cleaning

- Unplug the display before cleaning the face of the display screen.
- Use a slightly damp (not wet) cloth. Do not use an aerosol directly on the display screen because over-spraying may cause electrical shock.

## On Repacking

- Do not throw away the carton and packing materials. They make an ideal container in which to transport the unit. When shipping the unit to another location, repack it in its original material.

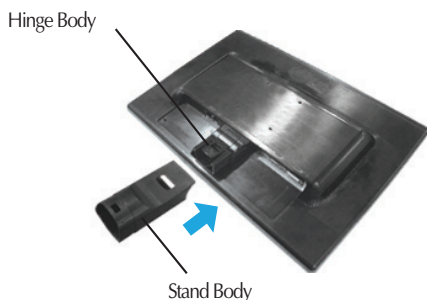
## On Disposal

- The fluorescent lamp used in this product contains a small amount of mercury.
- Do not dispose of this product with general household waste. Disposal of this product must be carried out in accordance to the regulations of your local authority.

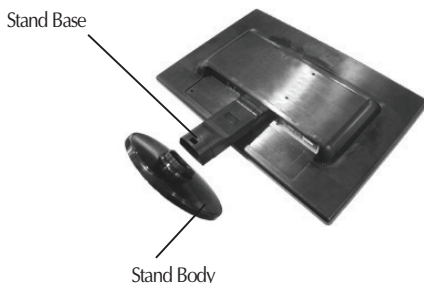
- Before setting up the monitor, ensure that the power to the monitor, the computer system, and other attached devices is turned off.

## Connecting the stand

1. Place the monitor with its front facing downward on a soft cloth.
2. Assemble the Stand Body into the product in the correct direction as shown in the picture.  
Make sure you push it until you hear it "click".

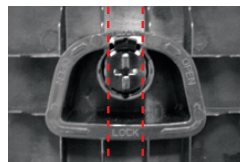


3. Assemble the Stand Base(Front, Rear) into the Stand Body in the correct direction.



www.DataSheet4U.com

4. Tie down the base lock to perpendicularity direction.
5. Once assembled take the monitor up carefully and face the front side



### Important

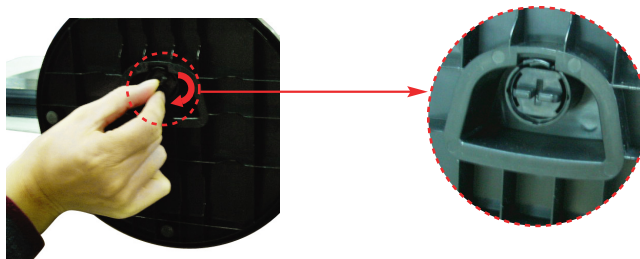
- This illustration depicts the general model of connection. Your monitor may differ from the items shown in the picture.
- Do not carry the product upside down holding only the stand base. The product may fall and get damaged or injure your foot.

## Disassembling the stand

1. Put a cushion or soft cloth on a flat surface.
2. Place the monitor face Down on the cushion or soft cloth.

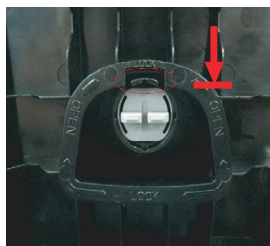


3. Change your lock on the product as it follows and turn it in the arrow direction.

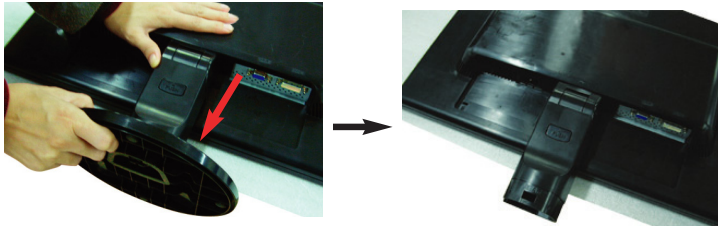


If you can't release the stand base even the locking knob is at a release position, Please push the indicated knob down and retry it.

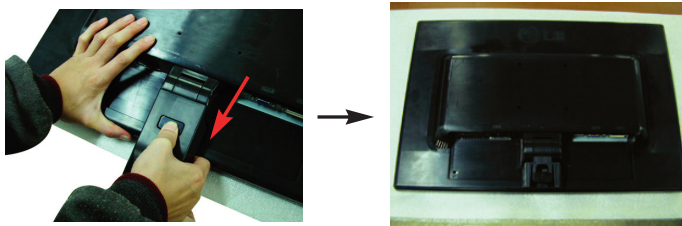
www.DataSheet4U.com



4. Pull out the Stand to remove.



5. Pushing the PUSH button, Take the stand base from stand body.



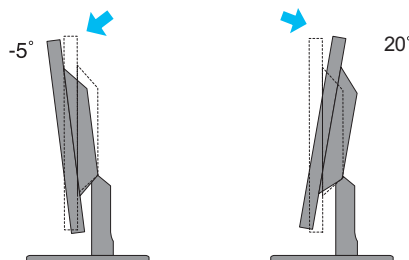
- Before setting up the monitor, ensure that the power to the monitor, the computer system, and other attached devices is turned off.

## Positioning your display

1. Adjust the position of the panel in various ways for maximum comfort.

- Tilt Range :  $-5^{\circ}$  ~  $20^{\circ}$

www.DataSheet4U.com



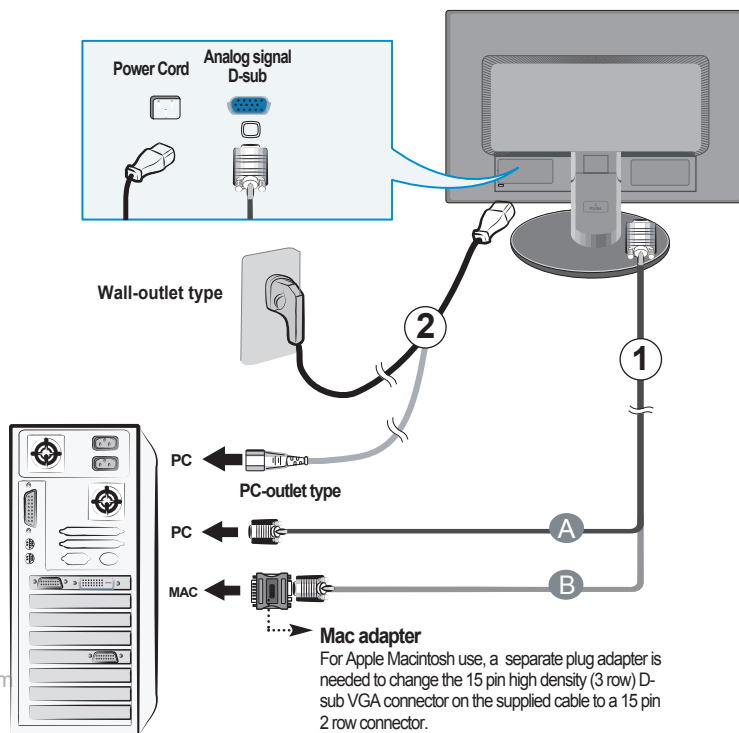
### Ergonomic

It is recommended that in order to maintain an ergonomic and comfortable viewing position, the forward tilt angle of the monitor should not exceed 5 degrees.


## Using the Computer

1. Make sure to turn off the computer and product. Connect the cable as below sketch map from ① to ②.

- A Connect Dsub Cable (PC)
- B Connect Dsub Cable (Mac)



www.DataSheet4U.com

2. Press  button on the front switch panel to turn the power on. When monitor power is turned on, the 'Self Image Setting Function' is executed automatically.

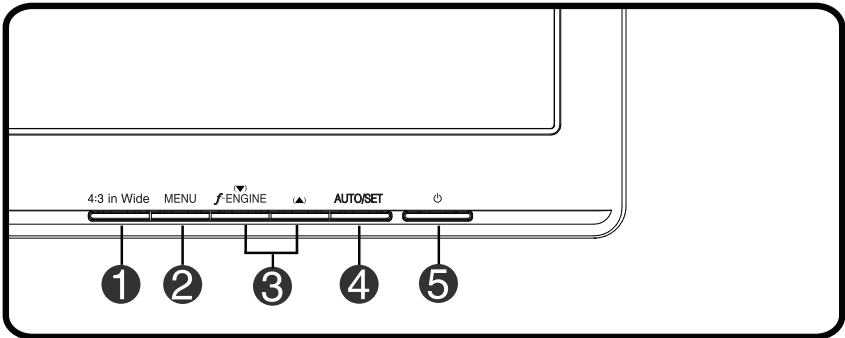
PROCESSING SELF  
IMAGE SETTING



### NOTE

'Self Image Setting Function'? This function provides the user with optimal display settings. When the user connects the monitor for the first time, this function automatically adjusts the display to optimal settings for individual input signals.


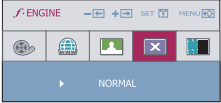

'AUTO/SET' Function? When you encounter problems such as blurry screen, blurred letters, screen flicker or tilted screen while using the device or after changing screen resolution, press the AUTO/SET function button to improve resolution.

Front Panel Controls



Control	Function
<div>1</div> <div>4:3 in Wide</div>	<p>To select the image size of the screen.</p> <div></div> <div><div>WIDE</div><div>4:3</div></div> <p>* 4:3 : Depending on the input video signal ratio, it is automatically changed to an optimized screen ratio.</p>
<div>2</div> <div>MENU Button</div> <div><div>OSD LOCKED</div><div>OSD UNLOCKED</div></div>	<p>Use this button to enter or exit the On Screen Display.</p> <p><b>OSD LOCKED/UNLOCKED</b></p> <p>This function allows you to lock the current control settings, so that they cannot be inadvertently changed. Press and hold the <b>MENU button</b> for several seconds. The message "<b>OSD LOCKED</b>" should appear.</p> <p>You can unlock the OSD controls at any time by pushing the <b>MENU button</b> for several seconds. The message "<b>OSD UNLOCKED</b>" should appear.</p>



Control	Function
<div>3</div> <div>▼▲ Buttons</div>	<p>Use these buttons to select or adjust functions in the On Screen Display.</p> <div><div></div><div>For more information, refer to page A15.</div></div> <div></div>
<div>4</div> <div>AUTO/SET Button</div>	<p>Use this button to enter a selection in the On Screen Display.</p> <div><div></div><div><div><b>AUTO IMAGE ADJUSTMENT</b></div><div>When adjusting your display settings, always press the <b>AUTO/SET</b> button before entering the On Screen Display(OSD). This will automatically adjust your display image to the ideal settings for the current screen resolution size (display mode).</div><div>The best display mode is</div><div>- 19 inch monitor : <b>1440 x 900</b></div><div>- 20.1/22 inch monitor : <b>1680 x 1050</b></div></div></div>
<div>5</div> <div>Power Button</div>	<p>Use this button to turn the display on or off.</p> <div><div><b>Power Indicator</b></div><div>This Indicator lights up blue when the display operates normally(On Mode). If the display is in Sleep Mode (Energy Saving), this indicator color changes to amber.</div></div>

## Screen Adjustment

Making adjustments to the image size, position and operating parameters of the display is quick and easy with the On Screen Display Control system. A short example is given below to familiarize you with the use of the controls. The following section is an outline of the available adjustments and selections you can make using the OSD.

### NOTE

- Allow the display to stabilize for at least 30 minutes before making image adjustments.

To make adjustments in the On Screen Display, follow these steps:

**MENU → ▼ ▲ → AUTO/SET → ▼ ▲ → MENU**

- 1 Press the **MENU Button**, then the main menu of the OSD appears.
- 2 To access a control, use the **▼ or ▲ Buttons**. When the icon you want becomes highlighted, press the **AUTO/SET Button**.
- 3 Use the **▼ / ▲ Buttons** to adjust the image to the desired level. Use the **AUTO/SET Button** to select other sub-menu items.
- 4 Push the **MENU Button** once to return to the main menu to select another function. Push the **MENU Button** twice to exit from the OSD.

The following table indicates all the On Screen Display control, adjustment, and setting menus.

Main menu	Sub-menu		A	Reference
PICTURE	BRIGHTNESS		●	To adjust the brightness, contrast and gamma of the screen
	CONTRAST		●	
	GAMMA		●	
COLOR	PRESET	sRGB	●	To customize the color of the screen
		6500K	●	
		9300K	●	
	RED		●	
	GREEN		●	
	BLUE		●	
TRACKING	HORIZONTAL		●	To adjust the position of the screen
	VERTICAL		●	
	CLOCK		●	To improve the clarity and stability of the screen
	PHASE		●	
	SHARPNESS		●	
SETUP	LANGUAGE		●	To customize the screen status for a user's operating environment
	OSD POSITION	HORIZONTAL	●	
		VERTICAL	●	
	WHITE BALANCE		●	
	POWER INDICATOR		●	
	FACTORY RESET		●	
FLATRON F-ENGINE	MOVIE		●	To select or customize desired image settings
	INTERNET		●	
	USER		●	
	NORMAL		●	
	DEMO		●	

● : Adjustable  
A : Analog Input

## NOTE

- The order of icons may differ depending on the model (A10~A15).

**Press the MENU Button, then the main menu of the OSD appears.**



- OSD (On Screen Display) menu languages on the monitor may differ from the manual.

Main menu	Sub menu	Description
-----------	----------	-------------

PICTURE

PICTURE

PICTURE

MENU SET

BRIGHTNESS

50

CONTRAST

50

GAMMA

50

■ MENU : Exit

■ - : Decrease

■ + : Increase

■ SET : Select another sub-menu

**BRIGHTNESS** To adjust the brightness of the screen.

**CONTRAST** To adjust the contrast of the screen.

**GAMMA** Set your own gamma value. : -50/0/50  
On the monitor, high gamma values display whitish images and low gamma values display high contrast images.

COLOR

COLOR

COLOR

MENU SET

PRESET

50

RED

50

GREEN

50

BLUE

50

■ MENU : Exit

■ - : Decrease

■ + : Increase

■ SET : Select another sub-menu

**PRESET** Select the screen color.

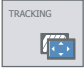
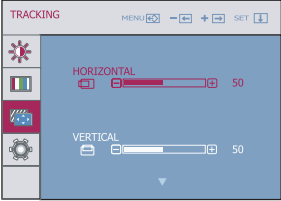
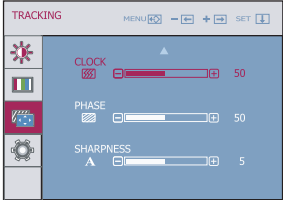
- sRGB: Set the screen color to fit the SRGB standard color specification.
- 6500K: Slightly reddish white.
- 9300K: Slightly bluish white.






**RED** Set your own red color levels.

**GREEN** Set your own green color levels.

**BLUE** Set your own blue color levels.

A12

Main menu	Sub menu	Description
	<b>TRACKING</b>	
	<b>HORIZONTAL</b> To move image left and right.  <b>VERTICAL</b> To move image up and down.	
	<b>CLOCK</b> To minimize any vertical bars or stripes visible on the screen background. The horizontal screen size will also change.  <b>PHASE</b> To adjust the focus of the display. This item allows you to remove any horizontal noise and clear or sharpen the image of characters.  <b>SHARPNESS</b> To adjust the clearness of the screen.	
<ul style="list-style-type: none"> <li>■ <b>MENU</b> : Exit</li> <li>■ <b>-</b> : Decrease</li> <li>■ <b>+</b> : Increase</li> <li>■ <b>SET</b> : Select another sub-menu</li> </ul>		

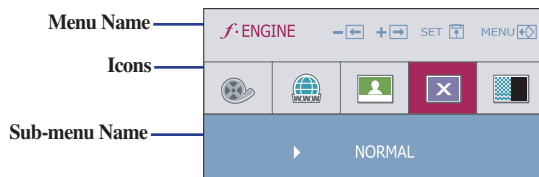
Main menu	Sub menu	Description
 <p><b>SETUP</b></p>	<b>LANGUAGE</b>	To choose the language in which the control names are displayed.
 <p><b>OSD POSITION</b></p>	<b>OSD POSITION</b>	To adjust position of the OSD window on the screen.
 <p><b>WHITE BALANCE</b></p>	<b>WHITE BALANCE</b>	<p>If the output of the video card is different the required specifications, the color level may deteriorate due to video signal distortion. Using this function, the signal level is adjusted to fit into the standard output level of the video card in order to provide the optimal image.</p> <p>Activate this function when white and black colors are present in the screen.</p>
 <p><b>POWER INDICATOR</b></p>	<b>POWER INDICATOR</b>	<p>Use this function to set the power indicator on the front side of the monitor to <b>ON</b> or <b>OFF</b>.</p> <p>If you set <b>OFF</b>, it will go off.</p> <p>If you set <b>ON</b> at any time, the power indicator will automatically be turned on.</p>
 <p><b>FACTORY RESET</b></p>	<b>FACTORY RESET</b>	<p>Restore all factory default settings except "<b>LANGUAGE</b>."</p> <p>Press the <b>-</b> button to reset immediately.</p>

- **MENU** : Exit
- **-** : Adjust
- **+** : Adjust
- **SET** : Select another sub-menu

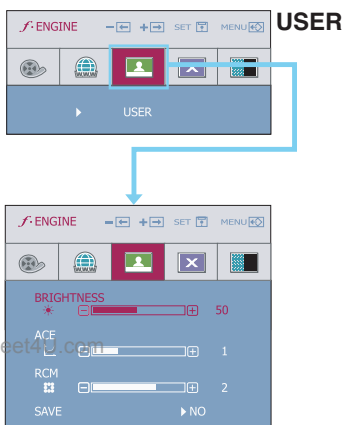
If this does not improve the screen image, restore the factory default settings.

If necessary, perform the white balance function again. This function will be enabled only when the input signal is an analog signal.

- ■ ■ The OSD screen will appear when you touch the **ENGINE** button on the left side of the monitor.



Main menu	Sub menu	Description
	<b>MOVIE</b> <b>INTERNET</b>	<p>This feature lets you easily select the best desired image condition optimized to the environment (ambient illumination, image types etc).</p> <p><b>MOVIE:</b> For animation images in videos or movies  <b>INTERNET:</b> For text images (Word processing etc.)</p>



- USER** User
- You can manually adjust brightness, ACE or RCM. You can save or restore the adjusted value even when using a different environment.
- ... (Brightness): Adjusts screen brightness.
  - ... **ACE**(Adaptive Clarity Enhancer): Selects the clarity mode.
  - ... **RCM**(Real Color Management): Selects the color mode.

	0	Not applied
	1	Green enhance
	2	Flesh tone
	3	Color Enhance

Select the **SAVE** sub-menu using the **AUTO/SET** button and save the **YES** value using the **▼, ▲** buttons.

	<b>NORMAL</b> <b>DEMO</b>	<p><b>NORMAL</b> This is under normal operating conditions.</p> <p><b>DEMO</b> This is just for advertising to customer in the shops. It's setting is same with Movie mode and screen is divided by half.</p>
--	------------------------------	---



Check the following before calling for service.

No image appears	
● Is the power cord of the display connected?	• Check and see if the power cord is connected properly to the power outlet.
● Is the power on and the power indicator blue or green?	• Adjust the brightness and the contrast.
● Is the power indicator amber?	• If the display is in power saving mode, try moving the mouse or pressing any key on the keyboard to bring up the screen. • Try to turn on the PC.
● Do you see an "OUT OF RANGE" message on the screen?	• This message appears when the signal from the PC (video card) is out of horizontal or vertical frequency range of the display. See the 'Specifications' section of this manual and configure your display again.
● Do you see a "CHECK SIGNAL CABLE" message on the screen?	• This message appears when the signal cable between your PC and your display is not connected. Check the signal cable and try again.

www.DataSheet4U.com

Do you see a "OSD LOCKED" message on the screen?	
● Do you see "OSD LOCKED" when you push MENU button?	• You can secure the current control settings, so that they cannot be inadvertently changed. You can unlock the OSD controls at any time by pushing the <b>MENU</b> button for several seconds: the message " <b>OSD UNLOCKED</b> " will appear.

Display image is incorrect	
<ul style="list-style-type: none"> <li>● <b>Display Position is incorrect.</b></li> </ul>	<ul style="list-style-type: none"> <li>• Press the <b>AUTO/SET</b> button to automatically adjust your display image to the ideal setting. If the results are unsatisfactory, adjust the image position using the <b>H position</b> and <b>V position</b> icon in the on screen display.</li> </ul>
<ul style="list-style-type: none"> <li>● <b>On the screen background, vertical bars or stripes are visible.</b></li> </ul>	<ul style="list-style-type: none"> <li>• Press the <b>AUTO/SET</b> button to automatically adjust your display image to the ideal setting. If the results are unsatisfactory, decrease the vertical bars or stripes using the <b>CLOCK</b> icon in the on screen display.</li> </ul>
<ul style="list-style-type: none"> <li>● <b>Any horizontal noise appearing in any image or characters are not clearly portrayed.</b></li> </ul>	<ul style="list-style-type: none"> <li>• Press the <b>AUTO/SET</b> button to automatically adjust your display image to the ideal setting. If the results are unsatisfactory, decrease the horizontal bars using the <b>PHASE</b> icon in the on screen display.</li> <li>• Check <b>Control Panel --&gt; Display --&gt; Settings</b> and adjust the display to the recommended resolution or adjust the display image to the ideal setting. Set the color setting higher than 24 bits (true color).</li> </ul>

www.DataSheet4U.com

## Important

- Check **Control Panel --> Display --> Settings** and see if the frequency or the resolution were changed. If yes, readjust the video card to the recommend resolution.
- **Reasons for Recommending Optimal Resolution** : The aspect ratio is 16:10. If the input resolution is not 16:10 (for instance, 16:9, 5:4, 4:3), you might encounter problems such as blurred letters, blurry screen, cut-off screen display or tilted screen.
- The setting method can differ by computer and O/S (Operation System), and resolution mentioned above may not be supported by the video card performance. In this case, please ask to the computer or the video card manufacturer.

## Display image is incorrect

- |  |   |
|--|---|
| <ul style="list-style-type: none"> <li>● <b>The screen color is mono or abnormal.</b></li> </ul> | <ul style="list-style-type: none"> <li>• Check if the signal cable is properly connected and use a screwdriver to fasten if necessary.</li> <li>• Make sure the video card is properly inserted in the slot.</li> <li>• Set the color setting higher than 24 bits (true color) at <b>Control Panel - Settings</b>.</li> </ul> |
| <ul style="list-style-type: none"> <li>● <b>The screen blinks.</b></li> </ul>                    | <ul style="list-style-type: none"> <li>• Check if the screen is set to interlace mode and if yes, change it to the recommend resolution.</li> </ul>   |

## Have you installed the display driver?

- |  |   |
|--|---|
| <ul style="list-style-type: none"> <li>● <b>Have you installed the display driver?</b></li> </ul>  | <ul style="list-style-type: none"> <li>• Be sure to install the display driver from the display driver CD (or diskette) that comes with your display. Or, you can also download the driver from our web site: <a href="http://www.lge.com">http://www.lge.com</a>.</li> </ul> |
| <ul style="list-style-type: none"> <li>● <b>Do you see an "Unrecognized monitor, Plug&amp;Play (VESA DDC) monitor found" message?</b></li> </ul> | <ul style="list-style-type: none"> <li>• Make sure to check if the video card supports Plug&amp;Play function.</li> </ul>   |

<b>Display</b>	19 inches (48.14 cm) Flat Panel Active matrix-TFT LCD Anti-Glare coating 19 inches viewable 0.285*0.285 mm pixel pitch	
<b>Sync Input</b>	Horizontal Freq.	28 - 83 kHz (Automatic)
	Vertical Freq.	56 - 75 Hz (Automatic)
	Input Form	Separate TTL, Positive/Negative SOG (Sync On Green)
<b>Video Input</b>	Signal Input	15 pin D-Sub Connector
	Input Form	RGB Analog (0.7 Vp-p/ 75 ohm)
<b>Resolution</b>	Max	VESA 1440 x 900 @ 75 Hz
	Recommend	VESA 1440 x 900 @60 Hz
<b>Plug&amp;Play</b>	DDC 2AB	
<b>Power Consumption</b>	On Mode	: 36W(Typ.)
	Sleep Mode	≤ 1 W
	Off Mode	≤ 1 W
<b>Dimensions &amp; Weight</b>	With Stand	
	Without Stand	
	Width	44.84 cm / 17.65 inches
	Height	38.33 cm / 15.09 inches
	Depth	19.84 cm / 7.81 inches
<b>Tilt Range</b>	Net	4.1 kg (9.11 lbs)
	Tilt	-5° ~ 20°
<b>Power Input</b>	AC 100-240V~ 50/60Hz 0.8A	
<b>Environmental Conditions</b>	Operating Conditions	
	Temperature	10°C to 35 °C
	Humidity	10 % to 80 % non-Condensing
	Storage Conditions	
<b>Stand Base</b>	Temperature	-20°C to 60 °C
	Humidity	5 % to 90 % non-Condensing
<b>Power cord</b>	Attached ( ), Detached ( O )	
	Wall-outlet type or PC-outlet type	

## NOTE

- Information in this document is subject to change without notice.

<b>Display</b>	20.1 inches (51.11 cm) Flat Panel Active matrix-TFT LCD Anti-Glare coating 20.1 inches viewable 0.258*0.258 mm pixel pitch	
<b>Sync Input</b>	Horizontal Freq.	28 - 83 kHz (Automatic)
	Vertical Freq.	56 - 75 Hz (Automatic)
	Input Form	Separate TTL, Positive/Negative SOG (Sync On Green)
<b>Video Input</b>	Signal Input	15 pin D-Sub Connector
	Input Form	RGB Analog (0.7 Vp-p/ 75 ohm)
<b>Resolution</b>	Max	VESA 1680 x 1050 @60 Hz
	Recommend	VESA 1680 x 1050 @60 Hz
<b>Plug&amp;Play</b>	DDC 2AB	
<b>Power Consumption</b>	On Mode	: 40W(Typ.)
	Sleep Mode	≤ 1 W
	Off Mode	≤ 1 W
<b>Dimensions &amp; Weight</b>	With Stand	
	Width	47.39 cm / 18.66 inches
	Height	39.04 cm / 15.37 inches
	Depth	19.84 cm / 7.81 inches
	Net	4.5 kg (10 lbs)
<b>Tilt Range</b>	Tilt	-5° ~ 20°
<b>Power Input</b>	AC 100-240V~ 50/60Hz 1.0A	
<b>Environmental Conditions</b>	Operating Conditions	
	Temperature	10°C to 35 °C
	Humidity	10 % to 80 % non-Condensing
	Storage Conditions	
	Temperature	-20°C to 60 °C
	Humidity	5 % to 90 % non-Condensing
<b>Stand Base</b>	Attached (    ), Detached (    O    )	
<b>Power cord</b>	Wall-outlet type or PC-outlet type	

**NOTE**

- Information in this document is subject to change without notice.

<b>Display</b>	22 inches (55.868 cm) Flat Panel Active matrix-TFT LCD, Anti-Glare coating 22 inches viewable 0.282*0.282 mm pixel pitch	
<b>Sync Input</b>	Horizontal Freq.	28 - 83 kHz (Automatic)
	Vertical Freq.	56 - 75 Hz (Automatic)
	Input Form	Separate TTL, Positive/Negative SOG (Sync On Green)
<b>Video Input</b>	Signal Input	15 pin D-Sub Connector
	Input Form	RGB Analog (0.7 Vp-p/ 75 ohm)
<b>Resolution</b>	Max	VESA 1680 x 1050 @60 Hz
	Recommend	VESA 1680 x 1050 @60 Hz
<b>Plug&amp;Play</b>	DDC 2AB	
<b>Power Consumption</b>	On Mode	: 40W(Typ.)
	Sleep Mode	≤ 1 W
	Off Mode	≤ 1 W
<b>Dimensions &amp; Weight</b>	With Stand	
	Width	51.57 cm / 20.30 inches
	Height	41.80 cm / 16.46 inches
	Depth	20.94 cm / 8.24 inches
	Net	4.65 kg (10.33 lbs)
<b>Tilt Range</b>	Tilt	-5° ~ 20°
<b>Power Input</b>	AC 100-240V~ 50/60Hz 1.0A	
<b>Environmental Conditions</b>	Operating Conditions	
	Temperature	10°C to 35 °C
	Humidity	10 % to 80 % non-Condensing
	Storage Conditions	
	Temperature	-20°C to 60 °C
	Humidity	5 % to 90 % non-Condensing
<b>Stand Base</b>	Attached (    ), Detached (    O    )	
<b>Power cord</b>	Wall-outlet type or PC-outlet type	

**NOTE**

- Information in this document is subject to change without notice.

## Preset Modes (Resolution)

### ■ 19 inch monitor

Display Modes (Resolution)		Horizontal Freq. (kHz)	Vertical Freq. (Hz)
1	640 x 350	31.469	70
2	720 x 400	31.468	70
3	640 x 480	31.469	60
4	640 x 480	37.500	75
5	800 x 600	37.879	60
6	800 x 600	46.875	75
7	832 x 624	49.725	75
8	1024 x 768	48.363	60
9	1024 x 768	60.123	75
10	1152 x 870	68.681	75
11	1152 x 900	61.805	65
12	1280 x 1024	63.981	60
13	1280 x 1024	79.976	75
14	1440 x 900	55.500	60
*15	1440 x 900	55.935	60
16	1440 x 900	70.635	75

\*Recommend Mode

### ■ 20.1/22 inch monitor

Display Modes (Resolution)		Horizontal Freq. (kHz)	Vertical Freq. (Hz)
1	720 x 400	31.468	70
2	640 x 480	31.469	60
3	640 x 480	37.500	75
4	800 x 600	37.879	60
5	800 x 600	46.875	75
6	1024 x 768	48.363	60
7	1024 x 768	60.123	75
8	1152 x 864	67.500	75
9	1280 x 1024	63.981	60
10	1280 x 1024	79.976	75
11	1680 x 1050	64.674	60
*12	1680 x 1050	65.290	60

\*Recommend Mode

## Indicator

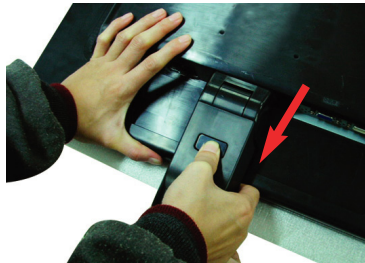
MODE	LED Color
On Mode	blue
Sleep Mode	amber
Off Mode	Off

**This monitor satisfies the specifications of the Wall mount plate or the interchange device.**

1. Place the monitor with its front facing downward on a soft cloth.



2. Separate the stand by pushing the PUSH button.



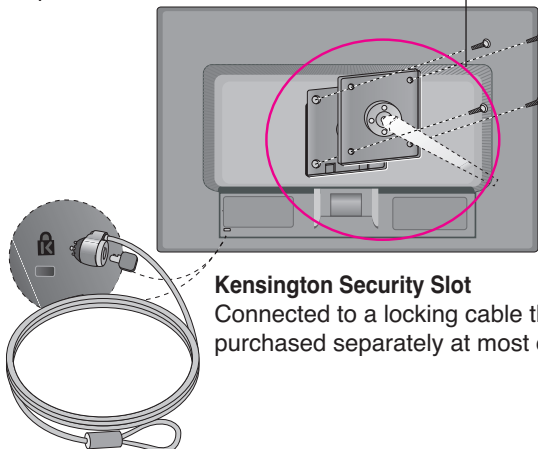
3. Install the Wall mount plate.

**Wall mount plate (Separate purchase)**

This is stand-type or wall mount type and is connectable with Wall mount plate.

Please refer to the installation guide for more details, which is provided when Wall mount plate is purchased.

www.DataSheet4U.com



**Kensington Security Slot**

Connected to a locking cable that can be purchased separately at most computer stores.



