

## Providing Excellence in EMI/RFI Filtering Components...

**TUSONIX, Inc.** manufactures thousands of EMC Products featuring an extensive line of EMI/RFI Filters and Capacitors.

We combine Technology, Expertise, Versatility and Innovation to produce the industry's most complete line of ceramic EMI/RFI Filters. TUSONIX draws upon its 50+ years of

manufacturing expertise and an accumulated base of ceramic dielectric technology to provide an ever expanding line of EMI/RFI Filters and Capacitors.

Tusonix products not only set the industry standard but lead the way in the development of tomorrow's EMI Technology.



### How to use this Catalog

This Catalog identifies standard parts produced by TUSONIX. Part numbers are listed in sections by mounting style (Solder Mount or Bushing Mount). Bushing parts are listed by circuit configuration and arranged in ascending order with respect to voltage rating at 125°C and then capacitance value.

#### FILTERS

Filters are assigned a four digit style number followed by a three digit variation number. (Example: 4100-003)

#### FEED-THRU CAPACITORS

Feed-thru capacitors are assigned a three or four digit style number followed by a three digit variation number, then the EIA Code for temperature characteristic, capacitance and tolerance. (Example: 2482-012-X5U0-272M)

For additional EIA Codes and Tolerances, please see page 21.

### Contents

|                                     |              |
|-------------------------------------|--------------|
| <b>Capacitors</b>                   | <b>2</b>     |
| <b>Solder Mount Filters</b>         | <b>3-8</b>   |
| <b>Bushing Mount Filters</b>        | <b>9-20</b>  |
| 4-40 Thread                         | <b>9-10</b>  |
| 6-40 Thread                         | <b>11</b>    |
| 6-32 Thread                         | <b>12</b>    |
| 8-32 Thread                         | <b>13-14</b> |
| 8-36 Thread                         | <b>15</b>    |
| 12-28 Thread                        | <b>15</b>    |
| 12-32 Thread                        | <b>16</b>    |
| 1/4-28 Thread                       | <b>17</b>    |
| 5/16-24 Thread                      | <b>17</b>    |
| 5/16-32 Thread                      | <b>17</b>    |
| High Voltage                        | <b>17</b>    |
| Metric Thread                       | <b>18</b>    |
| <b>Mil Cross Reference</b>          | <b>11</b>    |
| <b>Coaxial Broadband</b>            | <b>19-20</b> |
| <b>Standard Hardware Dimensions</b> | <b>20</b>    |
| <b>EIA/Tusonix Tolerance Codes</b>  | <b>21</b>    |
| <b>Installation Recommendations</b> | <b>21</b>    |
| <b>General Test Specifications</b>  | <b>22</b>    |

For additional product lines manufactured by TUSONIX, please refer to the back cover of this Catalog.

## TUSONIX Capabilities

### Manufacturing

TUSONIX utilizes more than 120,000 square feet (11,150 square meters) of manufacturing space, dedicated to providing high quality EMI/RFI products.

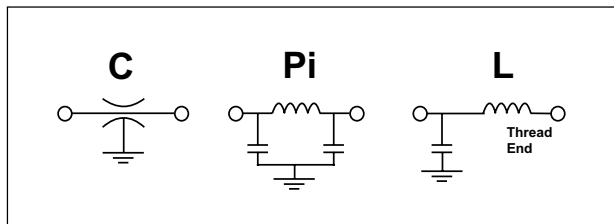
In addition to the standard catalog items, TUSONIX has numerous variations of these designs and can custom design a part to meet your particular specifications. TUSONIX maintains a staff of highly skilled Customer Engineers to assist our customers in the design of custom products.

### Meeting Customer Requirements

Headquartered in Tucson, Arizona, TUSONIX is devoted to bringing the company's broad product line to an ever expanding world market.

TUSONIX has more than five decades of efficient manufacturing expertise in its corporate heritage, and utilizes sophisticated equipment to provide customers with attractive pricing and full value for the products they purchase.

### Circuits Available in this Catalog



### TUSONIX Quality Objective

The timely delivery of quality products which exceed our customers' expectations through the use of effective teamwork and the process of continuous improvement.

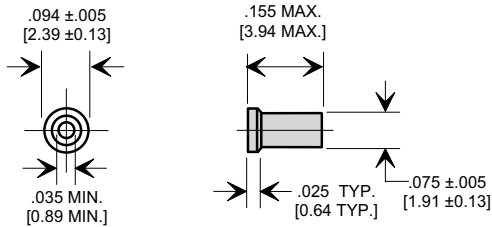
### TUSONIX Quality

Quality is the key ingredient in all TUSONIX products with approval to MIL-PRF-15733, MIL-PRF-81 and MIL-C-11015. TUSONIX maintains a fully approved Quality Assurance laboratory and relies heavily on Statistical Process Control to monitor critical operations.

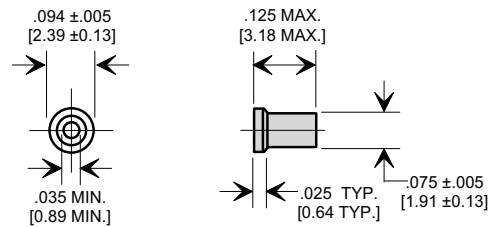
**TUSONIX**

7741 North Business Park Drive  
 Tucson, Arizona 85743  
 Ph: 520-744-0400 Fax: 520-744-6155  
 Website: [www.tusonix.com](http://www.tusonix.com)  
 E-mail: [sales@tusonix.com](mailto:sales@tusonix.com)

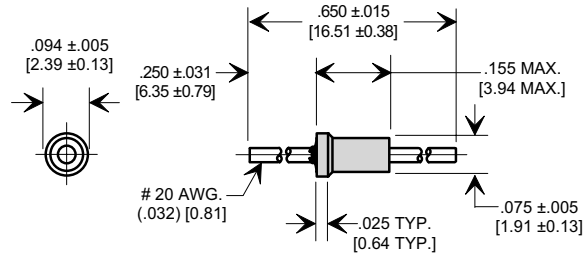
## Solder Mount Feed-Thru Capacitors



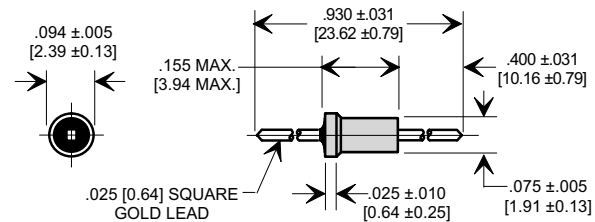
**STYLE 1**



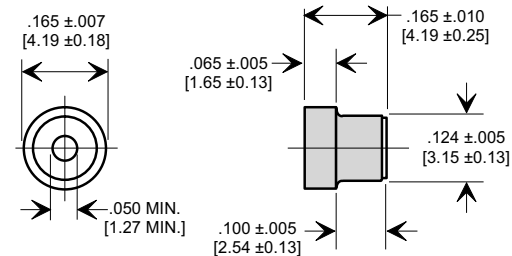
**STYLE 2**



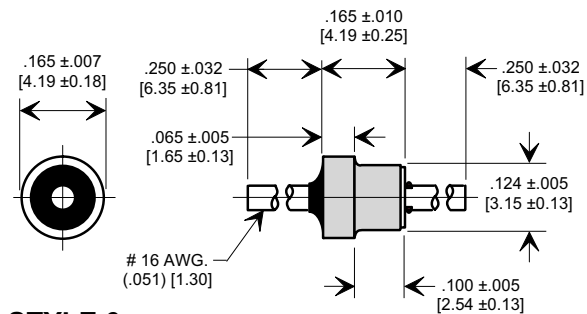
**STYLE 3**



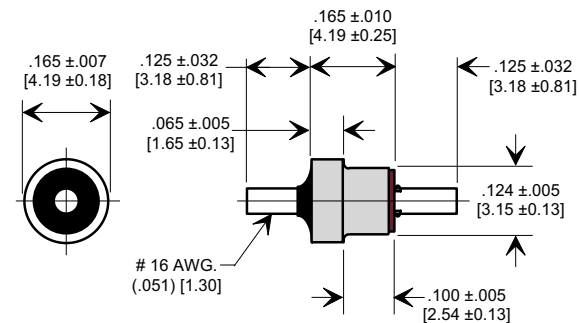
**STYLE 4**



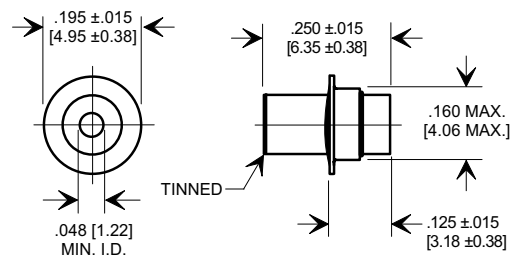
**STYLE 5**



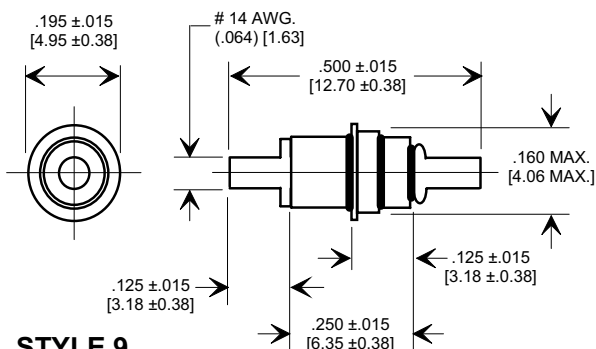
**STYLE 6**



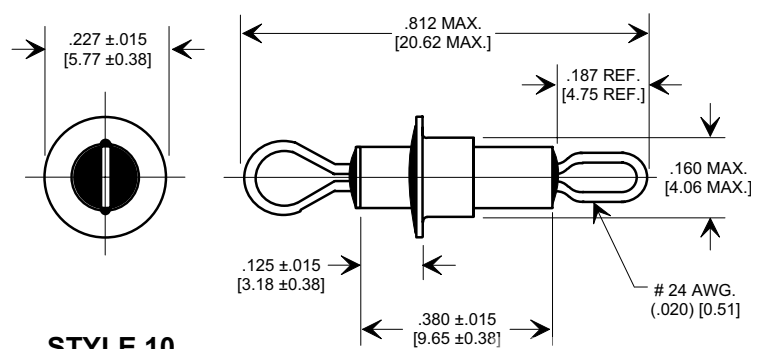
**STYLE 7**



**STYLE 8**

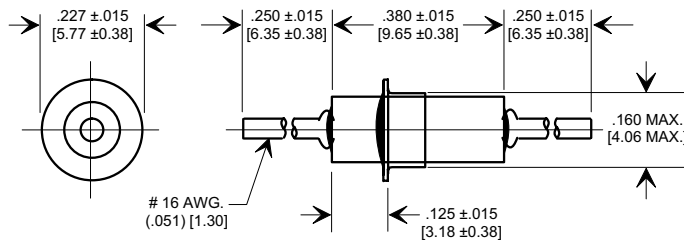


**STYLE 9**

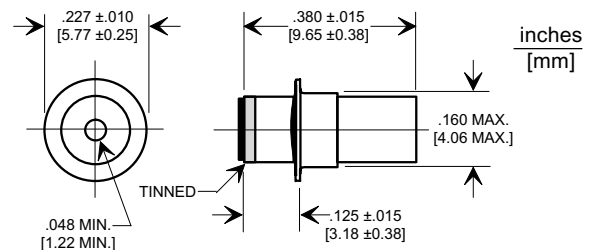


**STYLE 10**

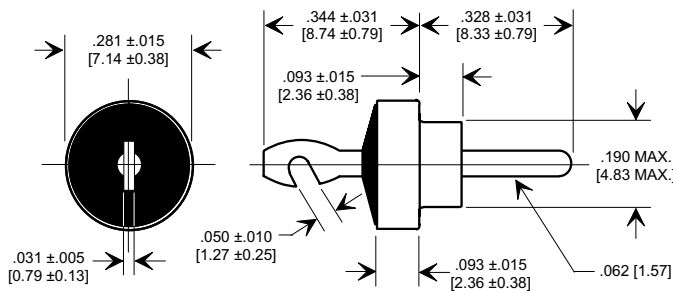
## Solder Mount Feed-Thru Capacitors



**STYLE 11**



**STYLE 12**



**STYLE 13**

| Series Number | Temperature Range | WVDC | MAX. CAP. Nominal (pF) |
|---------------|-------------------|------|------------------------|
| 2404          | Z5, Y5, X5        | 500  | 7000                   |
|               | X7                | 250  | 7000                   |
| 2482          | Z5, Y5, X5        | 300  | 4000                   |
|               | X7                | 150  | 4000                   |
| 2450          | Z5, Y5, X5        | 500  | 1800                   |
|               | X7                | 250  | 1800                   |
| 2461          | Z5, Y5, X5        | 200  | 1000                   |
|               | X7                | 100  | 1000                   |
| 2463          | Z5, Y5, X5        | 200  | 2000                   |
|               | X7                | 100  | 2000                   |

**Notes:**

v #14 AWG Lead 0.064 Dia.

Please see temperature Characteristics and EIA Codes on page 21.

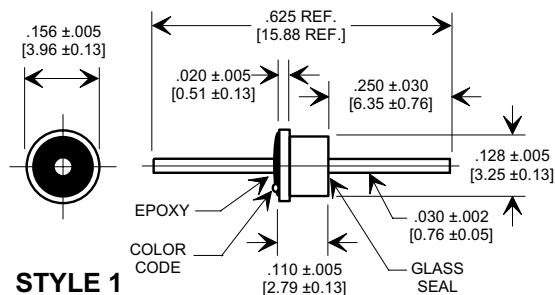
| TUSONIX<br>Part<br>Number | Style | Notes | Circuit | Working<br>Voltage<br>(dc) |       | Capacitance<br>(pF) | Capacitance<br>Tolerance | Current<br>(A) | Typical No-Load Insertion Loss<br>(dB) at 25°C per MIL-Std-220 |       |        |      |       |
|---------------------------|-------|-------|---------|----------------------------|-------|---------------------|--------------------------|----------------|--|-------|--------|------|-------|
|                           |       |       |         | 85°C                       | 125°C |                     |                          |                | 1MHz   | 10MHz | 100MHz | 1GHz | 10GHz |
|                           |       |       |         |                            |       |                     |                          |                |  |       |        |      |       |
| C Configuration           |       |       |         |                            |       |                     |                          |                |  |       |        |      |       |
| 2463-001-X5S0-471M        | 2     | --    | C       | 200                        | --    | 470                 | ±20%                     | --             | --   | --    | 12     | 27   | 27    |
| 2463-002-X5S0-471M        | 3     | --    | C       | 200                        | --    | 470                 | ±20%                     | 10             | --   | --    | 12     | 27   | 27    |
| 2463-003-X5U0-471P        | 4     | --    | C       | 200                        | --    | 470                 | +100-0%                  | 10             | --   | --    | 12     | 27   | 27    |
| 2461-000-X7V0-102P        | 5     | --    | C       | --                         | 100   | 1000                | +100-0%                  | --             | --   | 3     | 20     | 35   | 40    |
| 2461-001-X7V0-102AA       | 6     | --    | C       | --                         | 100   | 1000                | GMV                      | 20             | --   | 3     | 20     | 35   | 40    |
| 2461-002-X7V0-102M        | 7     | --    | C       | --                         | 100   | 1000                | ±20%                     | 20             | --   | 3     | 20     | 35   | 40    |
| 2463-000-X7U0-152P        | 1     | --    | C       | --                         | 100   | 1500                | +100-0%                  | --             | --   | 5     | 22     | 35   | 40    |
| 2463-002-X5U0-152P        | 3     | --    | C       | 200                        | --    | 1500                | +100-0%                  | 10             | --   | 5     | 22     | 35   | 40    |
| 2463-003-X5U0-152P        | 4     | --    | C       | 200                        | --    | 1500                | +100-0%                  | 10             | --   | 5     | 22     | 35   | 40    |
| 2482-001-X5U0-471M        | 9     | --    | C       | 300                        | --    | 470                 | ±20%                     | 20             | --   | --    | 12     | 27   | 27    |
| 2482-012-X5U0-102M        | 8     | --    | C       | 300                        | --    | 1000                | ±20%                     | --             | --   | 3     | 20     | 35   | 40    |
| 2482-001-X5U0-102M        | 9     | --    | C       | 300                        | --    | 1000                | ±20%                     | 20             | --   | 3     | 20     | 35   | 40    |
| 2450-001-X5R0-101K        | 13    | --    | C       | 500                        | --    | 100                 | ±10%                     | 20             | --   | --    | 3      | 20   | 28    |
| 2450-001-X5R0-471M        | 13    | --    | C       | 500                        | --    | 470                 | ±20%                     | 20             | --   | --    | 12     | 27   | 27    |
| 2404-000-X7R0-471M        | 11    | --    | C       | --                         | 250   | 470                 | ±20%                     | 20             | --   | --    | 12     | 27   | 27    |
| 2450-001-X5U0-102P        | 13    | --    | C       | 500                        | --    | 1000                | +100-0%                  | 20             | --   | 3     | 20     | 35   | 40    |
| 2404-000-X5U0-102P        | 11    | --    | C       | 500                        | --    | 1000                | +100-0%                  | 20             | --   | 3     | 20     | 35   | 40    |
| 2404-014-X5U0-102P        | 12    | --    | C       | 500                        | --    | 1000                | +100-0%                  | --             | --   | 3     | 20     | 35   | 40    |
| 2404-014-X5W0-502M        | 12    | --    | C       | 500                        | --    | 5000                | ±20%                     | --             | --   | 15    | 30     | 45   | 50    |
| 2404-000-X5W0-502Z        | 11    | v     | C       | 500                        | --    | 5000                | +80-20%                  | 20             | --   | 15    | 30     | 45   | 50    |
| 2404-007-X5W0-502Z        | 10    | --    | C       | 500                        | --    | 5000                | +80-20%                  | 15             | --   | 15    | 30     | 45   | 50    |

## Solder Mount C Filters

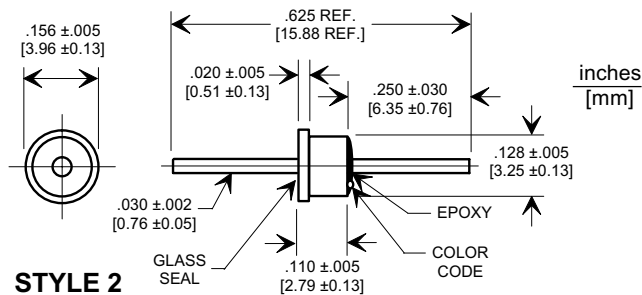
### 4300 Series Miniature EMI Filter

#### MICROWAVE APPLICATIONS:

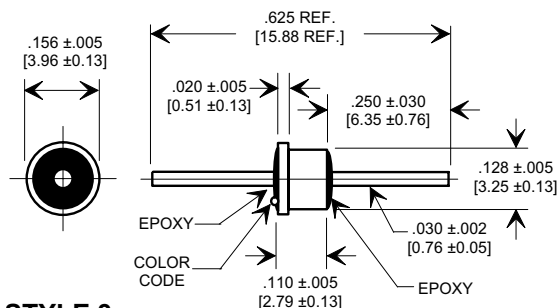
Oscillators • Attenuators  
Low Noise Amplifiers • Microwave Filters



STYLE 1



STYLE 2



STYLE 3

| TUSONIX<br>Part<br>Number                      | Style | Circuit | Working<br>Voltage<br>(dc) |       | Capacitance<br>(pF) | Capacitance<br>Tolerance | Current<br>(A) | Minimum No-Load Insertion Loss<br>(dB) at 25°C per MIL-Std-220 |       |        |      |       | Color<br>Code |
|--|-------|---------|----------------------------|-------|---------------------|--------------------------|----------------|--|-------|--------|------|-------|---------------|
|  |       |         | 85°C                       | 125°C |                     |                          |                | 1MHz   | 10MHz | 100MHz | 1GHz | 10GHz |               |
|  |       |         |                            |       |                     |                          |                |  |       |        |      |       |               |
| Epoxy Sealed Top (flange)/ Glass Sealed Bottom |       |         |                            |       |                     |                          |                |  |       |        |      |       |               |
| 4300-005                                       | 1     | C       | 70                         | 50    | 10,000              | GMV                      | 5              | 4  | 21    | 35     | 50   | 60    | BLACK         |
| 4300-055                                       | 1     | C       | 70                         | 50    | 10,000              | ±20%                     | 5              | 4  | 21    | 35     | 50   | 60    | BLK-GOLD      |
| 4300-006                                       | 1     | C       | 70                         | 50    | 15,000              | GMV                      | 5              | 7  | 20    | 35     | 55   | 60    | ORANGE        |
| 4300-013                                       | 1     | C       | 70                         | 50    | 27,000              | GMV                      | 5              | 10   | 28    | 42     | 65   | 65    | RED-RED       |
| 4300-014                                       | 1     | C       | 50                         | 50    | 50,000              | GMV                      | 5              | 15   | 35    | 45     | 70   | --    | BLU-BLU       |
| 4300-003                                       | 1     | C       | 150                        | 100   | 2700                | GMV                      | 5              | --   | 10    | 25     | 40   | 50    | RED           |
| 4300-053                                       | 1     | C       | 150                        | 100   | 2700                | ±20%                     | 5              | --   | 10    | 25     | 40   | 50    | RED-GOLD      |
| 4300-004                                       | 1     | C       | 150                        | 100   | 5000                | GMV                      | 5              | --   | 15    | 30     | 45   | 55    | YELLOW        |
| 4300-054                                       | 1     | C       | 150                        | 100   | 5000                | ±20%                     | 5              | --   | 15    | 30     | 45   | 55    | YEL-GOLD      |
| 4300-680                                       | 1     | C       | 300                        | 200   | 5                   | MAX                      | 5              | --   | --    | --     | --   | --    | BLK-BLK       |
| 4300-008                                       | 1     | C       | 300                        | 200   | 10                  | GMV                      | 5              | --   | --    | --     | 5    | 20    | VIOLET        |
| 4300-009                                       | 1     | C       | 300                        | 200   | 25                  | GMV                      | 5              | --   | --    | --     | 10   | 25    | BLUE          |
| 4300-000                                       | 1     | C       | 300                        | 200   | 100                 | GMV                      | 5              | --   | --    | 3      | 20   | 28    | GREEN         |
| 4300-050                                       | 1     | C       | 300                        | 200   | 100                 | ±20%                     | 5              | --   | --    | 3      | 20   | 28    | GRN-GOLD      |
| 4300-001                                       | 1     | C       | 300                        | 200   | 500                 | GMV                      | 5              | --   | --    | 15     | 35   | 40    | BROWN         |
| 4300-051                                       | 1     | C       | 300                        | 200   | 500                 | ±20%                     | 5              | --   | --    | 15     | 35   | 40    | BRWN-GOLD     |
| 4300-007                                       | 1     | C       | 300                        | 200   | 1000                | GMV                      | 5              | --   | 5     | 20     | 35   | 45    | GRAY          |
| 4300-002                                       | 1     | C       | 300                        | 200   | 1200                | GMV                      | 5              | --   | 5     | 20     | 35   | 45    | WHITE         |
| 4300-052                                       | 1     | C       | 300                        | 200   | 1200                | ±20%                     | 5              | --   | 5     | 20     | 35   | 45    | WHT-GOLD      |

Drawings not to scale.

## Solder Mount C Filters

### TUSONIX 4300 Series Miniature EMI Filters

These filters are ideal for applications where small size and high performance are critical. These C configured filters can be glass sealed on either one of the ends for optimal sealing between system compartments or components.

The gold plating on the leads offers excellent conductivity and connective ability using common gold bonding methods. The small package and large range of electrical characteristics of the 4300 Series make it an effective solution for a variety of microwave applications.

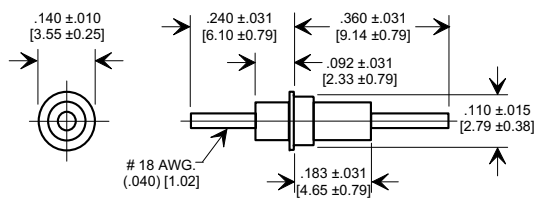


| TUSONIX<br>Part<br>Number                      | Style | Circuit | Working<br>Voltage<br>(dc) |       | Capacitance<br>(pF) | Capacitance<br>Tolerance | Current<br>(A) | Minimum No-Load Insertion Loss<br>(dB) at 25°C per MIL-Std-220 |       |        |      |       | Color<br>Code |
|--|-------|---------|----------------------------|-------|---------------------|--------------------------|----------------|--|-------|--------|------|-------|---------------|
|  |       |         | 85°C                       | 125°C |                     |                          |                | 1MHz   | 10MHz | 100MHz | 1GHz | 10GHz |               |
|  |       |         |                            |       |                     |                          |                |  |       |        |      |       |               |
| Glass Sealed Top (flange)/ Epoxy Sealed Bottom |       |         |                            |       |                     |                          |                |  |       |        |      |       |               |
| 4300-025                                       | 2     | C       | 70                         | 50    | 10,000              | GMV                      | 5              | 4  | 21    | 35     | 50   | 60    | BLACK         |
| 4300-065                                       | 2     | C       | 70                         | 50    | 10,000              | ±20%                     | 5              | 4  | 21    | 35     | 50   | 60    | BLK-GOLD      |
| 4300-026                                       | 2     | C       | 70                         | 50    | 15,000              | GMV                      | 5              | 7  | 20    | 35     | 55   | 60    | ORANGE        |
| 4300-031                                       | 2     | C       | 70                         | 50    | 27,000              | GMV                      | 5              | 10   | 28    | 42     | 65   | 65    | RED-RED       |
| 4300-034                                       | 2     | C       | 50                         | 50    | 50,000              | GMV                      | 5              | 15   | 35    | 45     | 70   | --    | BLU-BLU       |
| 4300-023                                       | 2     | C       | 150                        | 100   | 2700                | GMV                      | 5              | --   | 10    | 25     | 40   | 50    | RED           |
| 4300-063                                       | 2     | C       | 150                        | 100   | 2700                | ±20%                     | 5              | --   | 10    | 25     | 40   | 50    | RED-GOLD      |
| 4300-024                                       | 2     | C       | 150                        | 100   | 5000                | GMV                      | 5              | --   | 15    | 30     | 45   | 55    | YELLOW        |
| 4300-064                                       | 2     | C       | 150                        | 100   | 5000                | ±20%                     | 5              | --   | 15    | 30     | 45   | 55    | YEL-GOLD      |
| 4300-681                                       | 2     | C       | 300                        | 200   | 5                   | MAX                      | 5              | --   | --    | --     | --   | --    | BLK-BLK       |
| 4300-028                                       | 2     | C       | 300                        | 200   | 10                  | GMV                      | 5              | --   | --    | --     | 5    | 20    | VIOLET        |
| 4300-029                                       | 2     | C       | 300                        | 200   | 25                  | GMV                      | 5              | --   | --    | --     | 10   | 25    | BLUE          |
| 4300-020                                       | 2     | C       | 300                        | 200   | 100                 | GMV                      | 5              | --   | --    | 3      | 20   | 28    | GREEN         |
| 4300-060                                       | 2     | C       | 300                        | 200   | 100                 | ±20%                     | 5              | --   | --    | 3      | 20   | 28    | GRN-GOLD      |
| 4300-021                                       | 2     | C       | 300                        | 200   | 500                 | GMV                      | 5              | --   | --    | 15     | 35   | 40    | BROWN         |
| 4300-061                                       | 2     | C       | 300                        | 200   | 500                 | ±20%                     | 5              | --   | --    | 15     | 35   | 40    | BRWN-GOLD     |
| 4300-027                                       | 2     | C       | 300                        | 200   | 1000                | GMV                      | 5              | --   | 5     | 20     | 35   | 45    | GRAY          |
| 4300-022                                       | 2     | C       | 300                        | 200   | 1200                | GMV                      | 5              | --   | 5     | 20     | 35   | 45    | WHITE         |
| 4300-062                                       | 2     | C       | 300                        | 200   | 1200                | ±20%                     | 5              | --   | 5     | 20     | 35   | 45    | WHT-GOLD      |
| Epoxy Sealed Top (flange)/ Epoxy Sealed Bottom |       |         |                            |       |                     |                          |                |  |       |        |      |       |               |
| 4302-005                                       | 3     | C       | 70                         | 50    | 10,000              | GMV                      | 10             | 4  | 21    | 35     | 50   | 60    | BLACK         |
| 4302-006                                       | 3     | C       | 70                         | 50    | 15,000              | GMV                      | 10             | 7  | 20    | 35     | 55   | 60    | ORANGE        |
| 4302-013                                       | 3     | C       | 70                         | 50    | 27,000              | GMV                      | 10             | 10   | 28    | 42     | 65   | 65    | RED-RED       |
| 4302-014                                       | 3     | C       | 50                         | 50    | 50,000              | GMV                      | 10             | 15   | 35    | 45     | 70   | --    | BLU-BLU       |
| 4302-003                                       | 3     | C       | 150                        | 100   | 2700                | GMV                      | 10             | --   | 10    | 25     | 40   | 50    | RED           |
| 4302-004                                       | 3     | C       | 150                        | 100   | 5000                | GMV                      | 10             | --   | 15    | 30     | 45   | 55    | YELLOW        |
| 4302-680                                       | 3     | C       | 300                        | 200   | 5                   | MAX                      | 10             | --   | --    | --     | --   | --    | BLK-BLK       |
| 4302-008                                       | 3     | C       | 300                        | 200   | 10                  | GMV                      | 10             | --   | --    | --     | 5    | 20    | VIOLET        |
| 4302-009                                       | 3     | C       | 300                        | 200   | 25                  | GMV                      | 10             | --   | --    | --     | 10   | 25    | BLUE          |
| 4302-000                                       | 3     | C       | 300                        | 200   | 100                 | GMV                      | 10             | --   | --    | 3      | 20   | 28    | GREEN         |
| 4302-001                                       | 3     | C       | 300                        | 200   | 500                 | GMV                      | 10             | --   | --    | 15     | 35   | 40    | BROWN         |
| 4302-007                                       | 3     | C       | 300                        | 200   | 1000                | GMV                      | 10             | --   | 5     | 20     | 35   | 45    | GRAY          |
| 4302-002                                       | 3     | C       | 300                        | 200   | 1200                | GMV                      | 10             | --   | 5     | 20     | 35   | 45    | WHITE         |

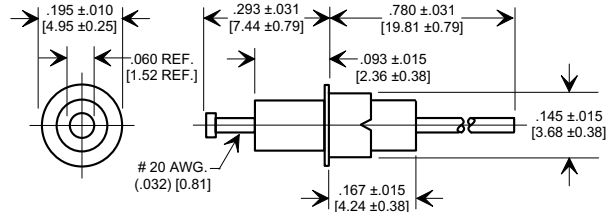


## Solder Mount Pi Filters

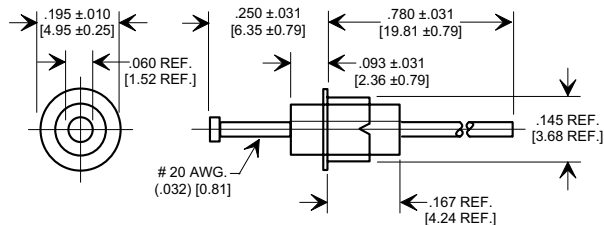
inches  
[mm]



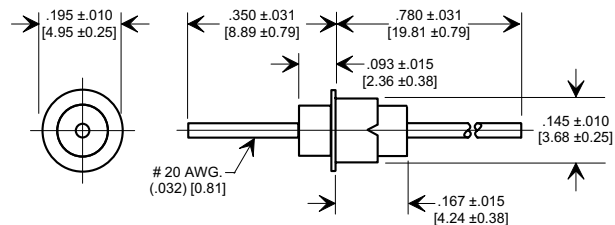
**STYLE 1**



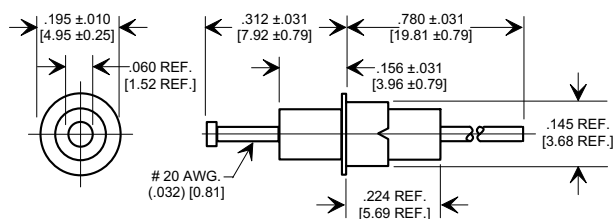
**STYLE 2**



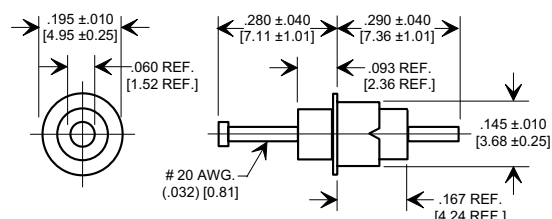
**STYLE 3**



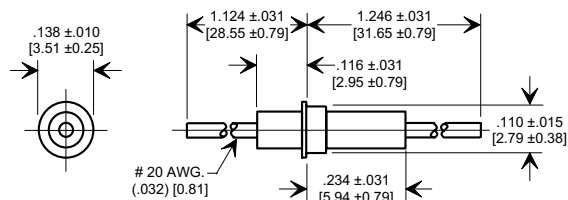
**STYLE 4**



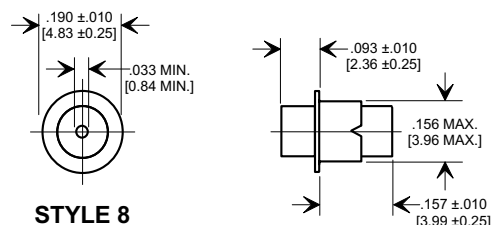
**STYLE 5**



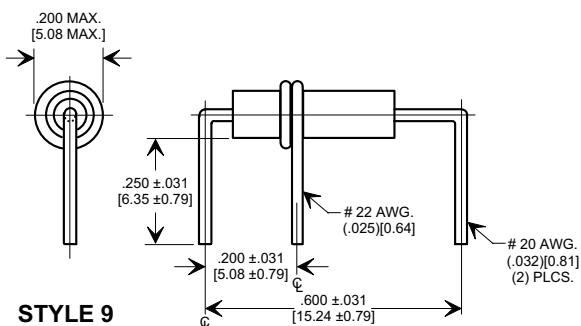
**STYLE 6**



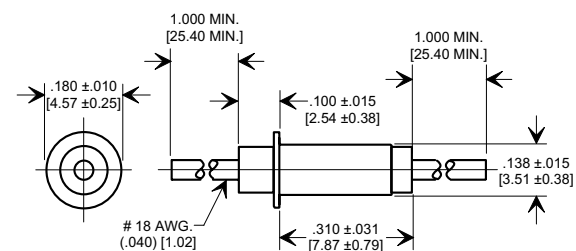
**STYLE 7**



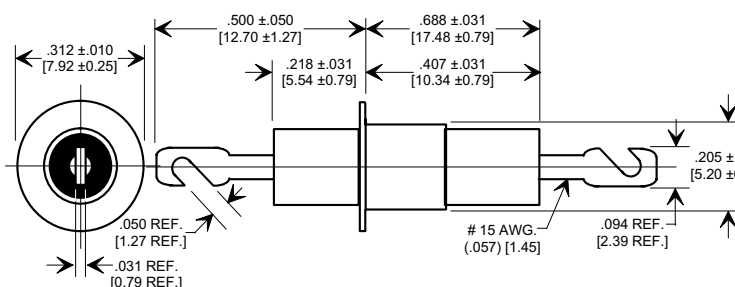
**STYLE 8**



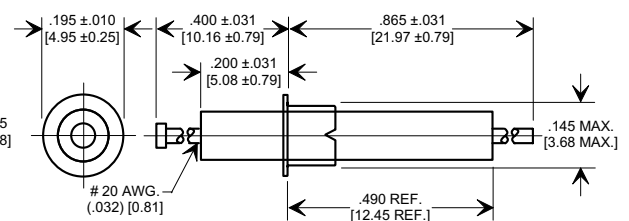
**STYLE 9**



**STYLE 10**

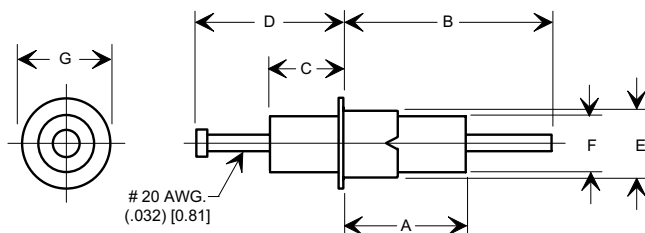


**STYLE 11**

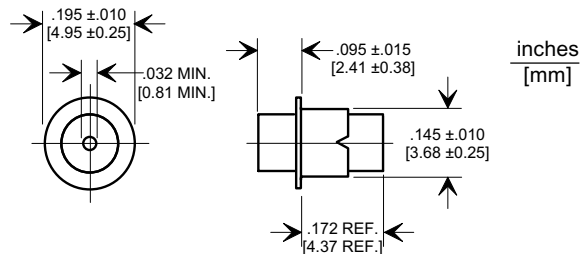


**STYLE 12**

## Solder Mount Pi Filters



STYLE 13 THROUGH 19



STYLE 20

DIMENSIONS FOR STYLES 13 THROUGH 19

| Style Number | MIL-PRF-15733 | DIM. A                       | DIM. B                         | DIM. C                       | DIM. D                         | DIM. E                       | DIM. F                       | DIM. G                       |
|--------------|---------------|------------------------------|--------------------------------|------------------------------|--------------------------------|------------------------------|------------------------------|------------------------------|
| 13           | /62-0003      | .272 ± .025<br>[6.91 ± 0.64] | .438 ± .062<br>[11.13 ± 1.57]  | .156 ± .015<br>[3.96 ± 0.38] | .312 ± .031<br>[7.92 ± 0.79]   | .145 ± .015<br>[3.68 ± 0.38] | ----                         | .190 ± .015<br>[4.83 ± 0.38] |
| 14           | /62-0004      | .151 ± .031<br>[3.84 ± 0.79] | .780 ± .031<br>[19.81 ± 0.79]  | .093 ± .031<br>[2.36 ± 0.79] | .273 ± .031<br>[6.93 ± 0.79]   | .145 ± .015<br>[3.68 ± 0.38] | ----                         | .196 ± .007<br>[4.98 ± 0.18] |
| 15           | /51-0002      | .226 ± .022<br>[5.74 ± 0.56] | .780 ± .031<br>[19.81 ± 0.79]  | .164 ± .022<br>[4.16 ± 0.56] | .312 ± .031<br>[7.92 ± 0.79]   | .145 ± .015<br>[3.68 ± 0.38] | ----                         | .203 ± .015<br>[5.16 ± 0.38] |
| 16           | /33-0001      | .170 ± .027<br>[4.32 ± 0.69] | .780 ± .031<br>[19.81 ± 0.79]  | .093 ± .015<br>[2.36 ± 0.38] | .288 ± .015<br>[7.32 ± 0.38]   | ----                         | .125 MAX<br>[3.18 MAX]       | .190 ± .015<br>[4.83 ± 0.38] |
| 16           | /33-0002♦     | .250 ± .031<br>[6.35 ± 0.79] | .406 ± .031<br>[10.31 ± 0.79]  | .156 ± .031<br>[3.96 ± 0.79] | .312 ± .031<br>[7.92 ± 0.79]   | .145 ± .015<br>[3.68 ± 0.38] | .125 ± .015<br>[3.18 ± 0.38] | .190 ± .015<br>[4.83 ± 0.38] |
| 17           | /62-0001      | .231 ± .046<br>[5.87 ± 1.17] | 1.231 ± .077<br>[31.27 ± 1.96] | .109 ± .031<br>[2.77 ± 0.79] | 1.109 ± .062<br>[28.17 ± 1.57] | .110 ± .015<br>[2.79 ± 0.38] | ----                         | .143 ± .010<br>[3.63 ± 0.25] |
| 18           | /62-0002♦     | .250 ± .031<br>[6.35 ± 0.79] | .406 ± .031<br>[10.31 ± 0.79]  | .156 ± .031<br>[3.96 ± 0.79] | .312 ± .031<br>[7.92 ± 0.79]   | .142 ± .007<br>[3.61 ± 0.18] | .122 ± .017<br>[3.10 ± 0.43] | .195 ± .010<br>[4.95 ± 0.25] |
| 19           | /51-0001      |                              |                                |                              |                                |                              |                              |                              |

**Notes:**

\*



**Straight Lead**

| TUSONIX<br>Part<br>Number | MIL-PRF-<br>15733<br>Number | Style | Notes | Circuit | Working<br>Voltage<br>(dc) |                | Capacitance<br>(pF) | Capacitance<br>Tolerance | Current<br>(A) | Minimum No-Load Insertion Loss<br>(dB) at 25°C per MIL-Std-220 |       |        |      |       |  |
|---------------------------|-----------------------------|-------|-------|---------|----------------------------|----------------|---------------------|--------------------------|----------------|--|-------|--------|------|-------|--|
|                           |                             |       |       |         | 85°C                       | 125°C          |                     |                          |                | 1MHz   | 10MHz | 100MHz | 1GHz | 10GHz |  |
|                           |                             |       |       |         |                            |                |                     |                          |                |  |       |        |      |       |  |
| Pi Configuration          |                             |       |       |         |                            |                |                     |                          |                |  |       |        |      |       |  |
| 4100-003                  | --                          | 1     | --    | Pi      | 125                        | 50             | 3000                | GMV                      | 15             | --   | 7     | 50     | 65   | 60    |  |
| 4101-505                  | /62-0003                    | 13    | --    | Pi      | --                         | 70             | 1500                | GMV                      | 10             | --   | --    | 50     | 65   | 65    |  |
| 4151-000                  | --                          | 3     | --    | Pi      | 100                        | 70             | 12,000              | GMV                      | 10             | --   | 25    | 70     | 65   | 65    |  |
| 4151-500                  | /62-0004                    | 14    | --    | Pi      | --                         | 70             | 12,000              | GMV                      | 10             | --   | 22    | 70     | --   | 65    |  |
| 4151-001                  | --                          | 5     | --    | Pi      | 100                        | 70             | 22,000              | GMV                      | 10             | --   | 35    | 70     | 70   | 70    |  |
| 4151-501                  | /51-0002                    | 15    | --    | Pi      | --                         | 70             | 22,000              | GMV                      | 10             | --   | 25    | 70     | 70   | 70    |  |
| 4151-003                  | --                          | 12    | --    | Pi      | 100                        | 70             | 60,000              | GMV                      | 10             | --   | 60    | 75     | 75   | 75    |  |
| 4100-000                  | --                          | 7     | --    | Pi      | 250                        | 125            | 1500                | GMV                      | 10             | --   | 6     | 45     | 60   | 60    |  |
| 4101-000                  | --                          | 20    | --    | Pi      | 250                        | 125            | 1750                | GMV                      | 10             | --   | 5     | 35     | 50   | 50    |  |
| 4101-002                  | --                          | 2     | --    | Pi      | 250                        | 125            | 1750                | GMV                      | 10             | --   | 5     | 50     | 60   | 60    |  |
| 4101-003                  | --                          | 4     | --    | Pi      | 250                        | 125            | 1750                | GMV                      | 10             | --   | 5     | 50     | 60   | 60    |  |
| 4101-004                  | --                          | 6     | --    | Pi      | 250                        | 125            | 1750                | GMV                      | 10             | --   | 5     | 50     | 60   | 60    |  |
| 4101-502                  | /33-0001                    | 16    | --    | Pi      | --                         | 125            | 1750                | GMV                      | 10             | --   | --    | 50     | 60   | 60    |  |
| 4101-503                  | /33-0002                    | 16    | *     | Pi      | --                         | 125            | 1750                | GMV                      | 10             | --   | --    | 50     | 60   | 60    |  |
| 4101-500                  | /66-0001                    | 8     | --    | Pi      | --                         | 125            | 1750                | GMV                      | 10             | --   | 5     | 35     | 50   | 50    |  |
| 4100-056                  | --                          | 9     | --    | Pi      | 250ac                      | 200dc          | 1000                | ±20%                     | 10             | --   | 3     | 20     | 55   | --    |  |
| 4100-002                  | --                          | 1     | --    | Pi      | 350                        | 200            | 1500                | GMV                      | 15             | --   | 5     | 25     | 60   | 60    |  |
| 4101-001                  | --                          | 17    | --    | Pi      | 350                        | 200            | 1500                | GMV                      | 10             | --   | 3     | 45     | 70   | 70    |  |
| 4101-501                  | /62-0001                    | 17    | --    | Pi      | --                         | 200            | 1500                | GMV                      | 10             | --   | 3     | 45     | 70   | 70    |  |
| 4100-500                  | /62-0002                    | 18    | *     | Pi      | --                         | 200            | 1500                | GMV                      | 10             | --   | 5     | 45     | 70   | --    |  |
| 4100-057                  | --                          | 9     | --    | Pi      | 250ac                      | 200dc          | 1500                | GMV                      | 10             | --   | 5     | 45     | 70   | --    |  |
| 4102-000                  | --                          | 10    | --    | Pi      | 350                        | 200            | 3000                | GMV                      | 10             | --   | 8     | 55     | 65   | 65    |  |
| 4100-053                  | --                          | 9     | --    | Pi      | 250ac                      | 200dc          | 5000                | GMV                      | 10             | --   | 18    | 60     | 70   | --    |  |
| 4101-504                  | /51-0001                    | 19    | --    | Pi      | 200                        | --             | 5500                | GMV                      | 10             | --   | 15    | 55     | 70   | 70    |  |
| 4106-000                  | --                          | 11    | --    | Pi      | 500dc<br>350ac             | 500dc<br>350ac | 3000                | GMV                      | 25             | --   | --    | 50     | 50   | 50    |  |
| 4106-001                  | --                          | 11    | --    | Pi      | 1000                       | 500            | 4500                | GMV                      | 25             | --   | 8     | 50     | 70   | 70    |  |

Drawings not to scale.