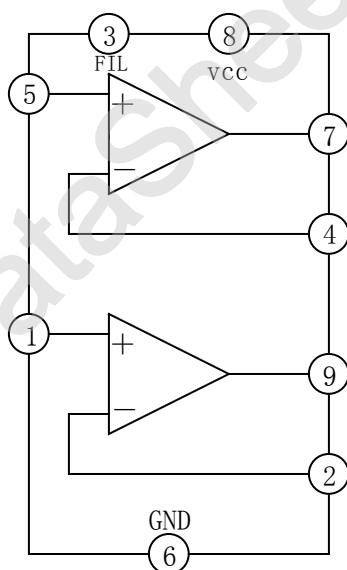


**6W STEREO AMPLIFIER—YD1007****DESCRIPTION**

The YD1007 is a class AB dual audio power amplifier assembled in single in line 9 pins package, specially designed for stereo application in music centers TV receivers and portable radios.

**FEATURES**

- \*High output power;
- \*High current capability;
- \*AC short circuit protection;
- \*Thermal overload protection.

**BLOCK DIAGRAM****WuXi YouDa Electronics Co., Ltd**

Add: E-3-A6, Li Yuan Economic Development Zone, Wuxi Jiangsu China

Tel: 86-510-5166655

Fax: 86-510-5169922

SHENZHEN OFFICE Tel: 86-755-83740369

13823533350

Fax: 86-755-83741418

**ABSOLUTE MAXIMUM RATINGS** (Tamb=25℃)

PARAMETER	SYMBOL	VALUE	UNIT
Supply Voltage	Vcc	28	V
Output Peak Current (Repetitive $f \geq 20\text{Hz}$ )	Io	3	A
Output Peak Current (Non repetitive $t=100 \mu s$ )	Io	3.5	A
Power Dissipation at Tcase=70℃	PD	10	W
Storage and Junction Temperature	Tstg	-40~+150	℃

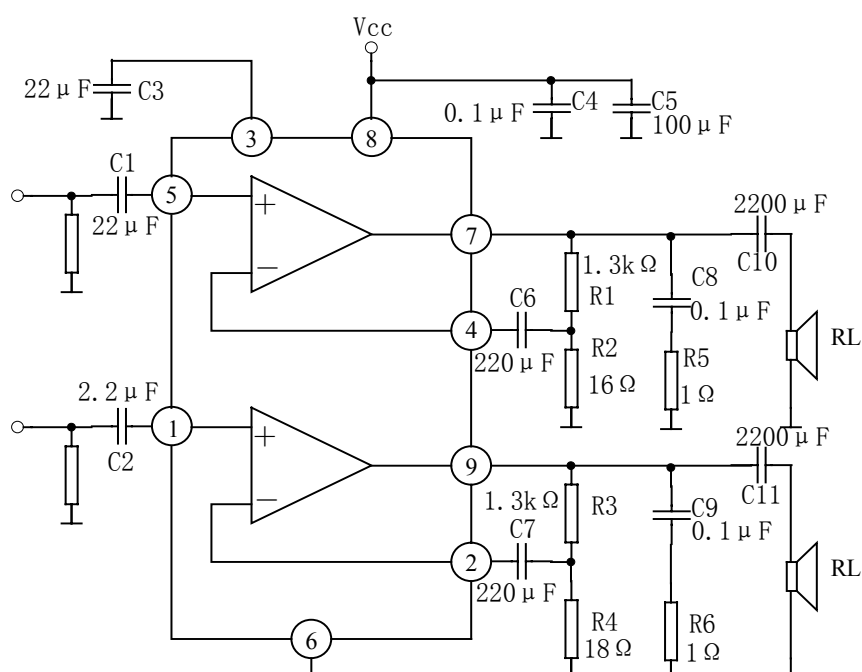
**ELECTRICAL CHARACTERISTICS**

(Tamb=25℃, Vcc=18V, f=1kHz, unless otherwise specified)

PARAMETER	SYMBOL	TEST CONDITIONS	MIN	TYP	MAX	UNIT
Supply Voltage	Vcc		8		26	V
Quiescent Output Voltage	Vo			8.5		V
Quiescent Circuit Current	Iccq			50	90	mA
Output Power (Each Channel)	Po	F=100 to 6kHz THD=0.5%	Vcc=18V, RL=4Ω	5.5	6	W
			Vcc=22V, RL=8Ω	5.5	6	
Input Saturation Voltage	Vim		300			mV
Total Harmonic Distortion	THD	f=1k, Vcc=18V, RL=4Ω Po=0.1~3W		0.1		%
		f=1k, Vcc=22V, RL=8Ω Po=0.1~3W		0.05		%
Input Resistance	Ri	f=1kHz	70	200		kΩ
Total Input Noise Voltage	VNI			1.5		μV
Cross Talk	CT	RL=∞, Rg=10kΩ, f=1kHz	50	60		dB
		RL=∞, Rg=10kΩ, f=10kHz	40	50		dB
Supply Voltage Rejection	RR	Rg=10kΩ, f <sub>ripple</sub> =1k, V <sub>ripple</sub> =1.5V		55		dB

Low Frequency roll Off (-3dB)	$f_L$	$R_L=4\ \Omega$ , $C_{10}=C_{11}=2200\ \mu F$		40		Hz
Low Frequency Roll Off (-3dB)	$f_H$			80		KHz
Voltage Gain	$G_v$	$R_L=4\ \Omega$	35.5	36	36.58	dB
Thermal Shut-down Junction Temperature	$T_j$			145		$^{\circ}C$

## APPLICATION CIRCUIT



OUTLINE DRAWING

