

High Voltage Diode H1153

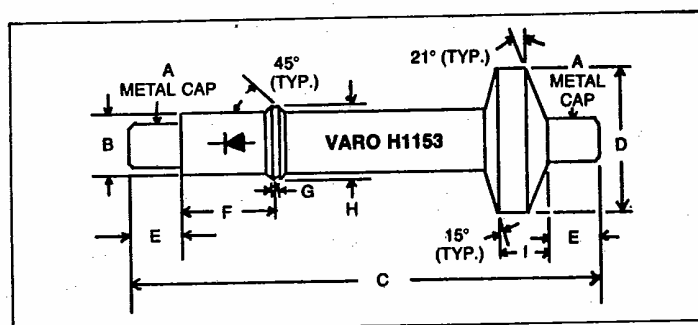
January 1981

Designed for High Temperature Operation
Low RFI/EMI

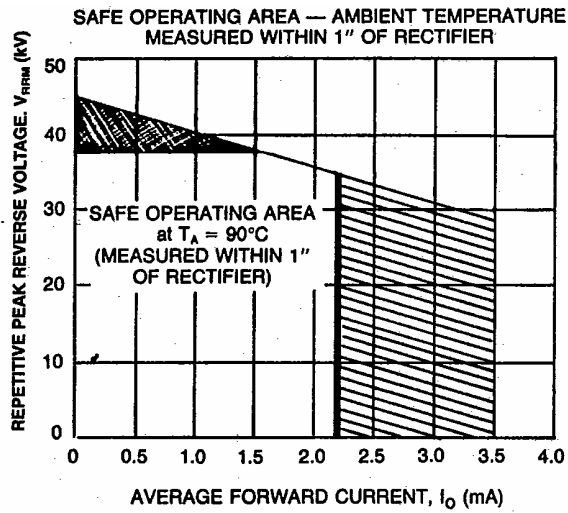


MAXIMUM RATINGS (At $T_A = 25^\circ\text{C}$ unless otherwise noted)	SYMBOL		UNITS
Repetitive Peak Reverse Voltage (Fig. 1)	V_{RRM}	45	kV
Average Forward Current (Fig. 1)	$I_{F(AV)}$	2.2	mA
Peak Surge Current, 1/2 Cycle at 60Hz, (Non-Rep)	I_{FSM}	200	mA
Maximum Ambient Operating Temperature	T_A	90	$^\circ\text{C}$
These maximum ratings cannot necessarily be used simultaneously; see Fig. 1 — Safe Operating Areas.			

ELECTRICAL CHARACTERISTICS (At $T_A = 25^\circ\text{C}$ unless otherwise noted)	SYMBOL		UNITS
Maximum Reverse Current at $V_R = 45\text{kV}$	I_R	1	μA
Maximum Forward Voltage Drop at $I_F = 5\text{mA}$	V_{FM}	180	V
Max. Anode-to-Cathode Capacitance at $V_R = 400\text{V}$, $F = 100\text{kHz}$	C_J	0.75	pF
Max. Reverse Recovery Time, $I_F = 2\text{mA}$, $I_R = -4\text{mA}$ and $I_{rr}(\text{rec}) = -1\text{mA}$ (Fig. 4)	t_{rr}	175	nsec



LTR	INCHES	MILLIMETERS
A	.360 DIA.	9.14 DIA.
B	.50 DIA.	12.70 DIA.
C	3.7	94
D	1.18 DIA.	29.97 DIA.
E	.4	10.2
F	.750	19.05
G	.050	1.27
H	.60 DIA.	15.24
I	.40	10.16



Operation in crosshatched regions should be limited to less than 5 minutes.

Use Calibrated Laboratory Grade Alcohol Thermometer To Measure Air Temp. Approx. 1" Below Rectifier.

FIGURE 1

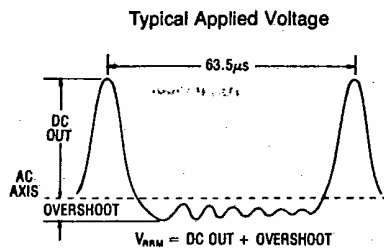


FIGURE 2

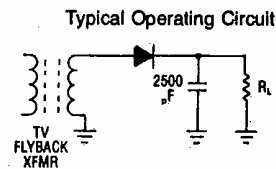


FIGURE 3

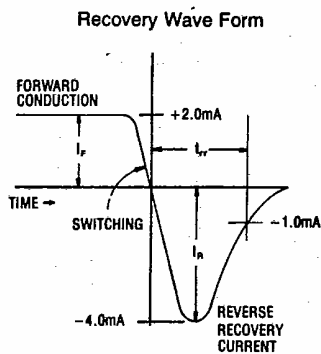


FIGURE 4A

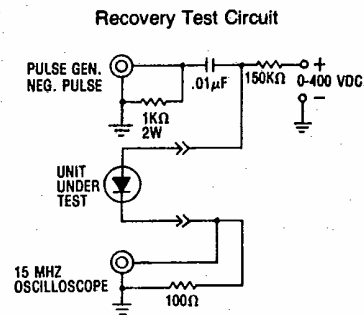


FIGURE 4B