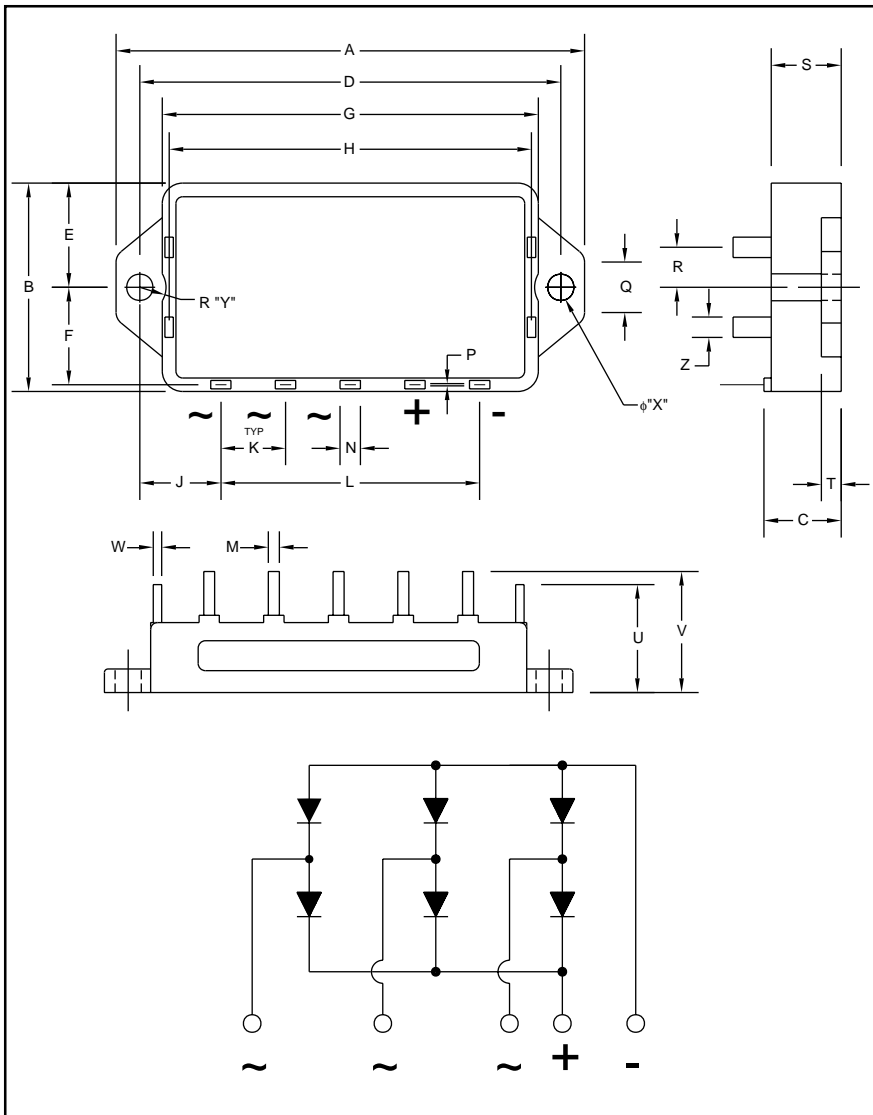


# RM20TN-H



Outline Drawing and Circuit Diagram

Dimensions	Inches	Millimeters
A	2.83	71.8
B	1.18	30.0
C	0.35	9.0
D	2.55	64.8
E	0.59	15.0
F	0.54	13.7
G	2.32	58.8
H	2.21	56.2
J	0.48	12.08
K	0.40	10.16
L	1.60	40.64
M	0.05	1.20

Dimensions	Inches	Millimeters
N	0.16	4.0
P	0.02	0.6
Q	0.55	14.0
R	0.20	5.0
S	0.35	9.0
T	0.14	3.5
U	0.45	11.5
V	0.71	18.0
W	0.06	1.5
X	0.16	4.0
Y	0.16	4.0
Z	0.08	2.0



## Description:

Mitsubishi Three-Phase Diode Bridge Modules are designed for use in applications requiring rectification of three-phase AC lines into DC voltage. Each module consists of six diodes and the interconnect required to form a complete three-phase bridge circuit. Each diode is electrically insulated from the mounting base plate for easy mounting on a common heatsink with other components.

## Features:

- ☐ Isolated Mounting
- ☐ Metal Base Plate
- ☐ Low Thermal Impedance

## Applications:

- ☐ Motor Control
- ☐ Inverters
- ☐ UPS

## Ordering Information:

RM20TN-H

## Absolute Maximum Ratings, $T_j = 25\text{ }^{\circ}\text{C}$ unless otherwise specified

Ratings	Symbol	RM20TN-H	Units
Repetitive Peak Reverse Voltage	$V_{RRM}$	800	Volts
Non-Repetitive Peak Reverse Voltage	$V_{RSM}$	840	Volts
Recommended AC Input Voltage	$E_A$	220	Volts
DC Output Current ( $T_b = 100^{\circ}\text{C}$ )	$I_O$	24	Amperes
Surge (Non-Repetitive) Forward Current (One Half Cycle at 60Hz, Peak Value)	$I_{FSM}$	255	Amperes
$I^2t$ for Fusing (Value for One Cycle of Surge Current)	$I^2t$	270	$\text{A}^2\text{sec}$
Junction Temperature	$T_j$	$-40 \sim +125$	$^{\circ}\text{C}$
Storage Temperature	$T_{stg}$	$-40 \sim +125$	$^{\circ}\text{C}$
Operating Frequency	$f$	1000	Hz
Maximum Mounting Torque M3.5 Mounting Screw	—	0.78 ~ 0.98	$\text{N} \cdot \text{m}$
Maximum Mounting Torque M3.5 Terminal Screw	—	0.78 ~ 0.98	$\text{N} \cdot \text{m}$
Isolation Voltage (Main Terminal to Baseplate, AC 1 min.)	$V_{iso}$	2500	$\text{V}_{rms}$

## Electrical and Thermal Characteristics, $T_j = 25\text{ }^{\circ}\text{C}$ unless otherwise specified

Characteristics	Symbol	Test Conditions	Min.	Typ.	Max.	Units
Repetitive Reverse Current	$I_{RRM}$	$T_j = 125^{\circ}\text{C}$ , $V_{RRM} = \text{Rated}$	—	—	8.0	mA
Forward Voltage Drop	$V_{FM}$	$T_j = 25^{\circ}\text{C}$ , $I_{FM} = 20\text{A}$ , Instantaneous Measurement	—	—	1.5	Volts
Thermal Resistance	$R_{th(j-b)}$	Junction to Base Plate	—	—	2.0	$^{\circ}\text{C}/\text{W}$
Thermal Resistance	$R_{th(b-f)}$	Base to Fin, Thermal Grease Applied	—	—	0.3	$^{\circ}\text{C}/\text{W}$
Isolation Resistance		At 500V DC Between Terminal and Base Plate	10	—	—	$\text{M}\Omega$

