

# E225x and E235x Series PAL Format Electronic Television Modulators

## FEATURES

- Power supply: 5 V
- Small Size: 44 mm × 44 mm × 17 mm
- Common Footprint
- Common Electrical Interface
- Standard pin-pitch between models
- I<sup>2</sup>C bus serial PLL control
- Same input connector locations between models
- Reduced component count
- High level of integration E2258T2 meets CENELEC emissions requirements

## DESCRIPTION

The E225x and E235x Series Modulators are new PAL format modulators with the output frequency set by a PLL.

These modulators provide direct Phase-Locked Loop tuning instead of the previous screwdriver setting, providing software flexibility over output channel control. The output may be tuned over the PAL channel range of 21 ~ 69.

These two new modulator series retain the common modulator mechanical footprint of previous designs. A variety of versions and options are available, as shown in the table.

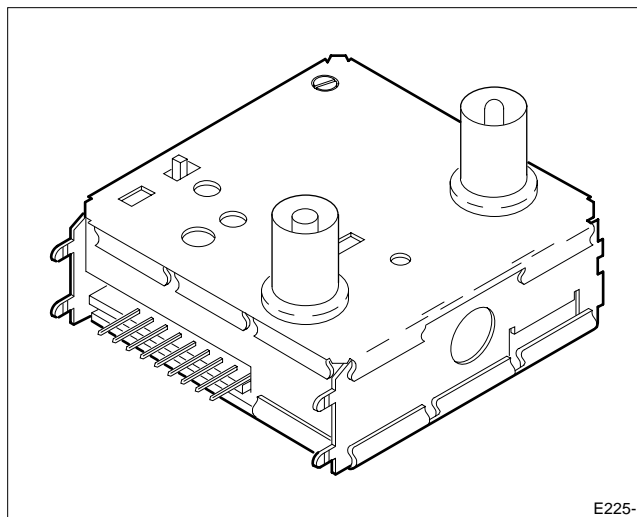
The PLL programming is provided by an I<sup>2</sup>C serial bus interface. Modulation factors of 100% and 55% are available.

Test and evaluation software is available upon request for programming the E225X and E235X modulator models.

## APPLICATIONS:

- Television/VCR
- Satellite receivers
- Multi-media adapters
- Video signal converters

## E2258T2 PACKAGAGE



## PROGRAMMABLE OPTIONS

- Output frequency
- Test Signal Generator (TSG) On/Off
- Test Modes On/Off
- Inter-carrier spacing for output Mode – G/I/K (E2354T)
- Audio carrier level: -10 to -17 dB with respect to the Video carrier (E2354T)

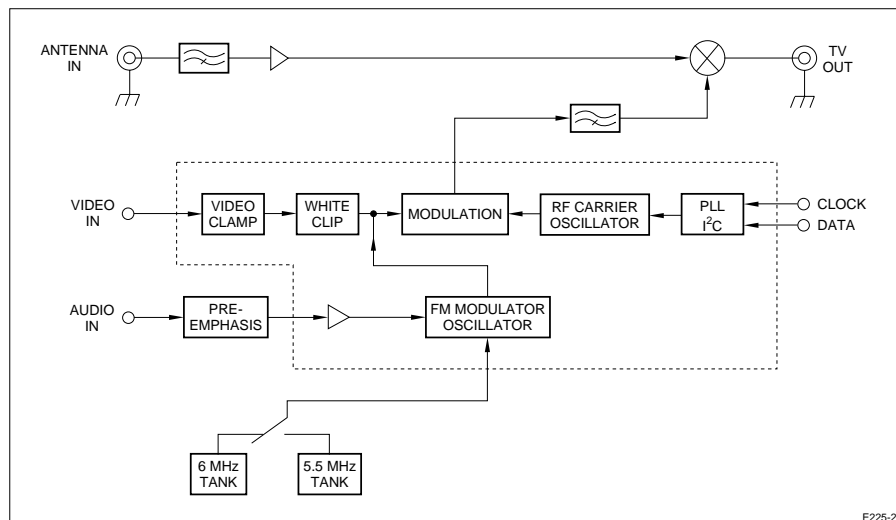
## SELECTION GUIDE

MODEL	PAL FORMAT	MODULATION FACTOR	PLL SETS
E2251T	G	100%	Channel, TSG, RF On/Off
E2251TA	G	55%	Channel, TSG, RF On/Off
E2258TA	G/I	55%	Channel, TSG, RF On/Off
E2258T2	G/I	55%	Channel, TSG, RF On/Off
E2354T	G/I/K	100%	Channel, TSG, Format, Power Save On/Off, Video/Audio Ratio
E2358T	G/I	100%	Channel, TSG, RF On/Off

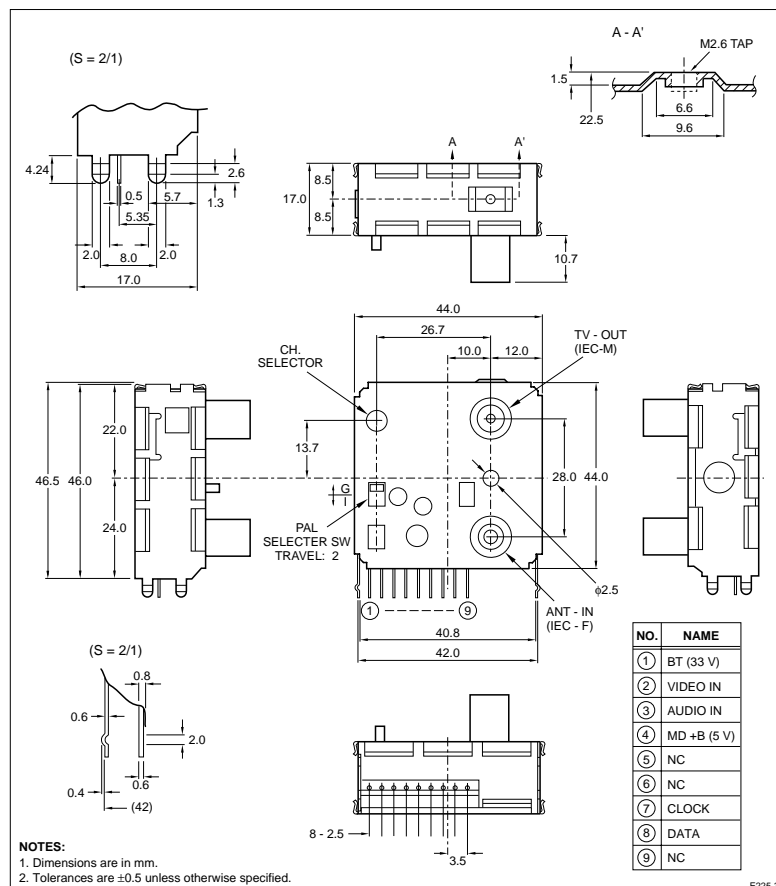
# PRODUCT INFORMATION

# SHARP

## BASIC BLOCK DIAGRAM



## MECHANICAL DIMENSIONS



## Sharp Electronics Corporation Regional Sales Offices

### North American Headquarters

Camas, WA  
Ph (360) 834-2500  
Fax (360) 834-8903

### West

Irvine, CA  
Ph (714) 250-0225  
Fax (714) 250-0438  
San Jose, CA  
Ph (408) 436-4900  
Fax (408) 436-0924

### Central

Romeoville, IL  
Ph (708) 226-2400  
Fax (708) 759-8572  
Auburn Hills, MI  
Ph (810) 377-9220  
Fax (810) 377-9222

Austin, TX  
Ph (512) 349-7262  
Fax (512) 349-7002

DFW Airport, TX  
Ph (214) 574-5205  
Fax (214) 456-0360

Houston, TX  
Ph (713) 955-9909  
Fax (713) 955-9910

### East

Burlington, MA  
Ph (617) 270-7979  
Fax (617) 229-9117

Annadale, NJ  
Ph (908) 713-0505  
Fax (908) 713-0566

Durham, NC  
Ph (919) 941-0065  
Fax (919) 941-0066

## Distributors

### Future Electronics

Canada  
Ph (514) 694-7710  
Fax (514) 695-3707

### Marshall Industries

El Monte, CA  
Ph (800) 522-0084  
Fax (818) 307-6173  
URL <http://www.marshall.com>

### Milgray

Farmindale, NY  
Ph (800) MILGRAY (645-4729)  
Fax (516) 293-6465

### Reptron

Tampa, FL  
Ph (800) 659-1361  
Fax (813) 854-2351

### Sterling Electronics Corp.

Houston, TX  
Ph (800) 745-5500  
Fax (713) 629-3939

**SHARP**  
FROM SHARP MINDS  
COME SHARP PRODUCTS™

FastFax Service: 1-800-833-9437  
Product Information: 1-800-642-0261  
World Wide Web Site: <http://www.sharpmeg.com>