



MOS Controlled Diode

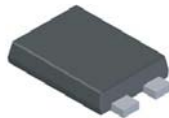
PRODUCT SUMMARY

V _{RRM}	I _O	V _F (MAX) @ 25°C	I _R (MAX) @ 25°C
45V	10A	0.49V	0.15mA

FEATURES

- Low Profile Design for Smart Phone Charger
- Ideal for SMT Mounting
- Low forward voltage drop
- High forward surge capability
- Excellent High Temperature Stability

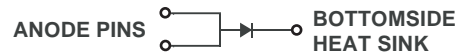
TO-277



Top View



Bottom View



ABSOLUTE MAXIMUM RATINGS (T_A=25°C unless otherwise noted)

Symbol	Parameter	Value	Unit
V _{RRM}	Peak Repetitive Reverse Voltage	45	V
V _{RWM}	Working Peak Reverse Voltage	45	V
V _{RM}	DC Blocking Voltage	45	V
V _{R(RMS)}	RMS Reverse Voltage	32	V
I _O	Average Rectified Output Current	10	A
I _{FSM}	Non-Repetitive Peak Forward Surge Current 8.3ms Single Half Sine-Wave Superimposed on Rated Load	120	A
E _{AS}	Non-Repetitive Avalanche Energy (T _J = 25°C, I _{AS} = 10, L = 5mH)	170	mJ
P _{ARM}	Repetitive Peak Avalanche Energy	24000	W

THERMAL CHARACTERISTICS

Symbol	Parameter	Value	Unit
R _{θJA}	Thermal Resistance, Junction-to-Ambient	70	°C/W
T _J	Operating Temperature Range	-55 to 150	°C
T _{STG}	Storage Temperature Range	-55 to 175	°C

ELECTRICAL CHARACTERISTICS (T_A=25°C unless otherwise specified)

Symbol	Parameter	Conditions	Min	Typ	Max	Unit
V _F	Forward Voltage Drop	I _F = 10A, T _J = 25°C		0.44	0.49	V
		I _F = 10A, T _J = 125°C		0.41	0.47	V
I _R	Leakage Current	V _R = 45V, T _J = 25°C		60	500	uA
		V _R = 45V, T _J = 125°C			100	mA
C _T	Total Capacitance	V _R = 45V, f = 1MHz		170		pF

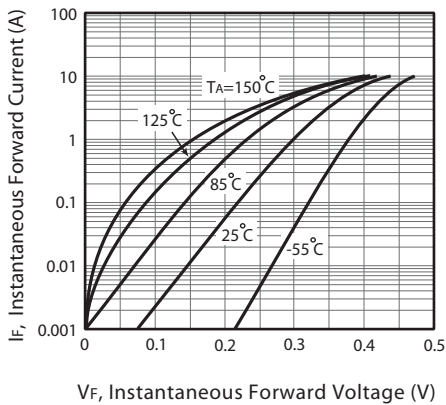


Figure 1. Typical Forward Characteristics

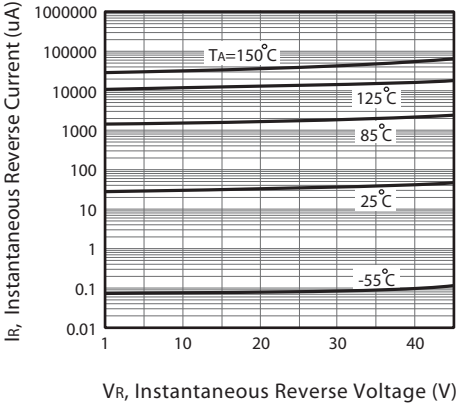


Figure 2. Typical Reverse Characteristics

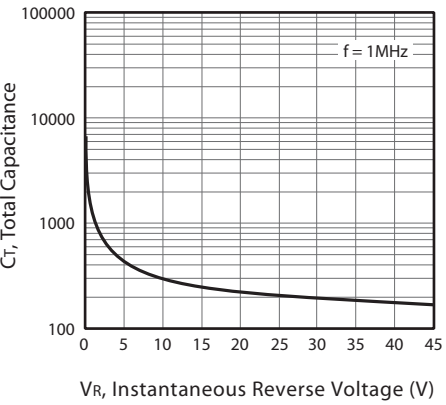


Figure 3. Total Capacitance vs. Reverse Voltage

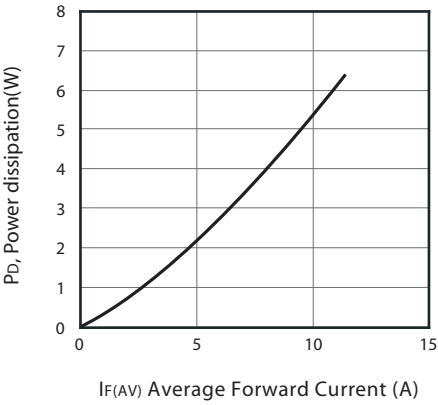


Figure 4. Forward Power Dissipation

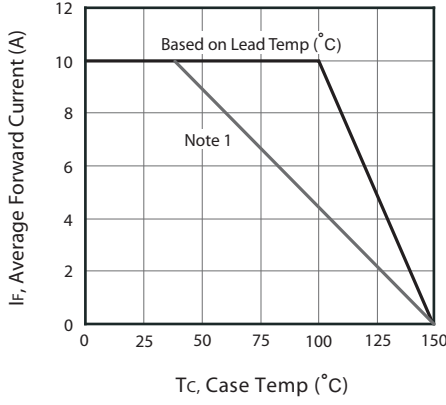


Figure 4. Forward Power Dissipation

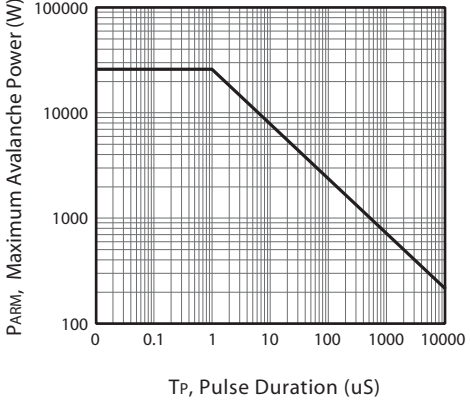


Figure 6. Maximum Avalanche Power Curve

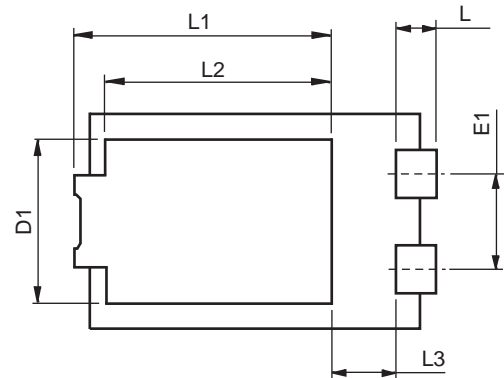
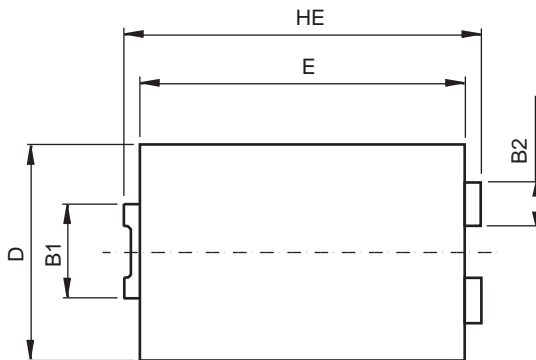
Note : 1.Device mounted on FR-4 substrate, 2oz copper.

SMD10U45SP

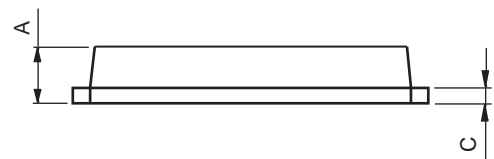
Ver 1.1

PACKAGE OUTLINE DIMENSIONS

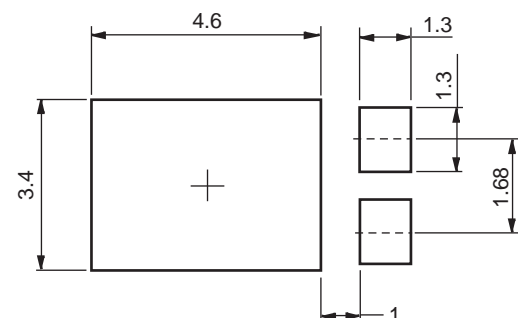
TO-277



SYMBOLS	MILLIMETERS	
	MIN.	MAX.
HE	6.40	6.60
E	5.60	5.80
D	4.10	4.30
B1	1.70	1.90
B2	0.80	1.00
A	1.05	1.20
C	0.30	0.40
L	0.85	1.10
L1	4.20	4.40
L2	3.52 Typ.	
L3	1.10	1.40
D1	3.00	3.30
E1	1.86 Typ.	



Mounting Pad Layout (unit:mm)

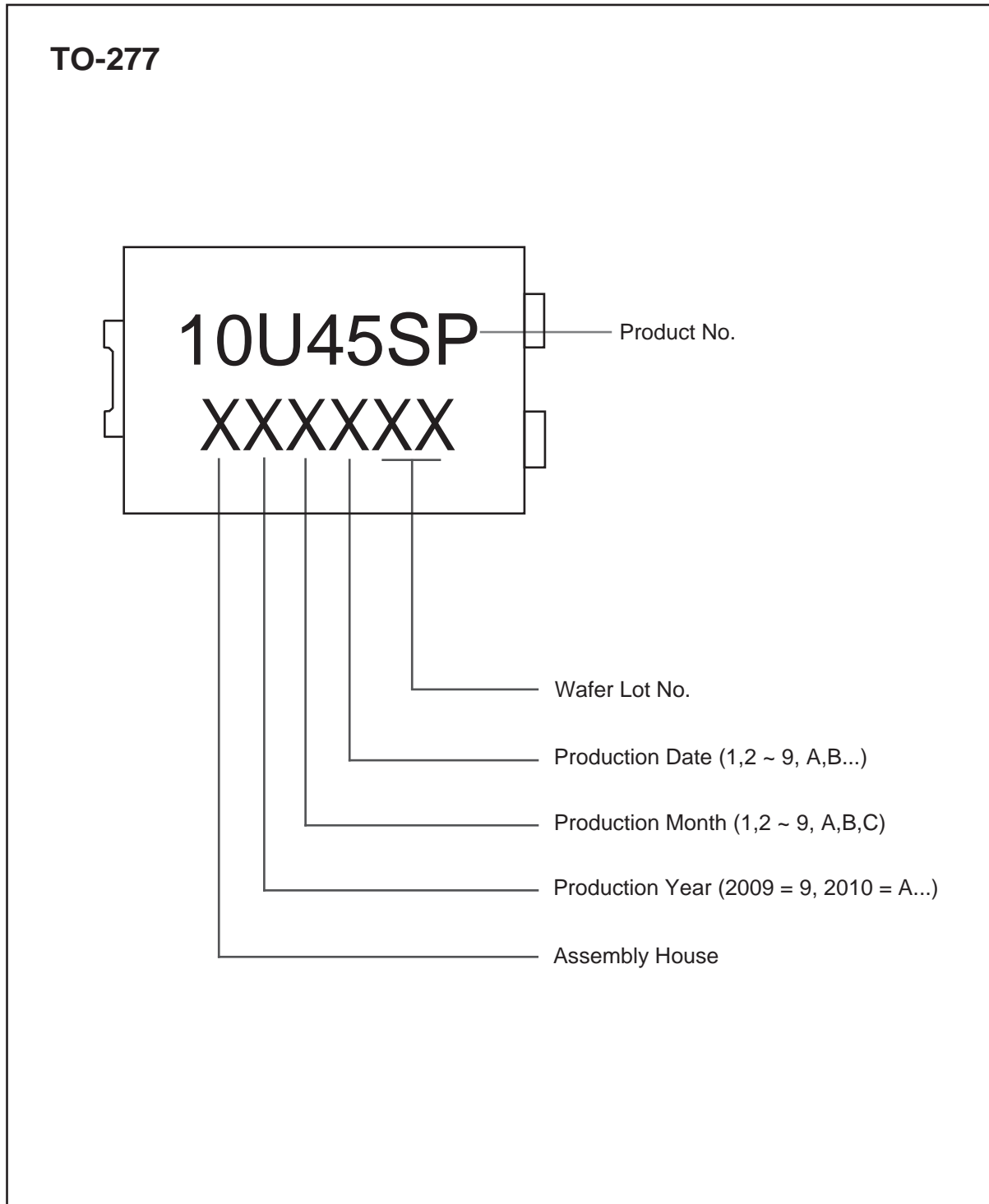


May,04,2015

SMD10U45SP

Ver 1.1

TOP MARKING DEFINITION



May,04,2015