

STANDARD RECOVERY DIODES GEN II DO5

Stud Version

Features

- High surge current capability
- Designed for a wide range of applications
- Stud cathode and stud anode version
- Leaded version available/ wire version available
- Low thermal resistance
- UL approval pending

80 A

Typical Applications

- Battery charges
- Converters
- Power supplies
- Machine tool controls
- Welding

Major Ratings and Characteristics

Parameters		80PF (R)...(W)	Units
		40 to 120	
I _{F(AV)}		80	A
	@ T _C	140	°C
I _{F(RMS)}		126	A
I _{FSM}	@ 50Hz	1500	A
	@ 60Hz	1570	
I ² t	@ 50Hz	11250	A ² s
	@ 60Hz	10230	
V _{RRM}	range	400 to 1200	V
T _J	range	- 55 to 180	°C

80PF(R)...



case style DO-203AB (DO-5)

80PF(R)...W



case style DO-203AB (DO-5)

80PF(R)...(W) Series

Bulletin I20207 rev. C 03/04

International
IR Rectifier**ELECTRICAL SPECIFICATIONS**

Voltage Ratings

Type number	Voltage Code	V_{RRM} , maximum repetitive peak reverse voltage V	V_{RSM} , maximum non-repetitive peak reverse voltage V	I_{RRM} max. @ $T_J = 150^\circ\text{C}$ mA
80PF (R)...(W)	40	400	500	9
	80	800	960	
	120	1200	1440	

Forward Conduction

Parameter		80PF(R)...(W)	Units	Conditions			
		40 to 120					
I _{F(AV)}	Max. average forward current @ Case temperature	80	A	180° conduction, half sine wave			
		140	°C				
I _{F(RMS)}	Max. RMS forward current	126	A				
I _{FSM}	Max. peak, one-cycle forward, non-repetitive surge current	1500	A	t = 10ms	No voltage	Sinusoidal half wave, Initial T _J = 150°C	
		1570		t = 8.3 ms	reapplied		
		1260		t = 10ms	100% V _{RRM}		
		1320		t = 8.3 ms	reapplied		
I ² t	Maximum I ² t for fusing	11250	A ² s	t = 10ms	No voltage		
		10230		t = 8.3ms	reapplied		
		7950		t = 10ms	100% V _{RRM}		
		7200		t = 8.3ms	reapplied		
I ² /t	Maximum I ² /t for fusing	112500	A ² /s	t = 0.1 to 10ms, no voltage reapplied			
V _{F(TO)}	Low level value of threshold voltage	0.73	V	(16.7% x π x I _{F(AV)}) < I < π x I _{F(AV)} , T _J = T _J max.			
r _f	Low level value of forward slope resistance	3.0	mΩ	(16.7% x π x I _{F(AV)}) < I < π x I _{F(AV)} , T _J = T _J max.			
V _{FM}	Max. forward voltage drop	1.40	V	I _{pk} = 220A, T _J = 25°C, t _p = 400μs rectangular wave			

Thermal and Mechanical Specifications

Parameter		80PF (R)...(W)	Units	Conditions
T_J	Max. junction operating temperature range	40 to 120	°C	
T_{stg}	Max. storage temperature range	-55 to 180		
R_{thJC}	Max. thermal resistance, junction to case	0.30	K/W	DC operation
R_{thCS}	Max. thermal resistance, case to heatsink	0.25		Mounting surface, smooth, flat and greased
T	Max. allowed mounting torque $\pm 10\%$	2.3 ÷ 3.4	Nm	Tighting on nut (1)
		20 ÷ 30	lbf · in	
		3.2 ÷ 4.3	Nm	Tighting on Hexagon (2)
		28 ÷ 38	lbf · in	
wt	Approximate weight	15.8 (0.56)	g (oz)	
Case style		DO-203AB (DO5)		See Outline Table

(1) As general recommendation we suggest to tight on Hexagon and not on nut

(2) Torque must be appliable only to Hexagon and not to plastic structure

ΔR_{thJC} Conduction

(The following table shows the increment of thermal resistance R_{thJC} when devices operate at different conduction angles than DC)

Conduction angle	Sinusoidal conduction	Rectangular conduction	Units	Conditions
180°	0.14	0.10	K/W	$T_J = T_{J \text{ max.}}$
120°	0.16	0.17		
90°	0.21	0.22		
60°	0.30	0.31		
30°	0.50	0.50		

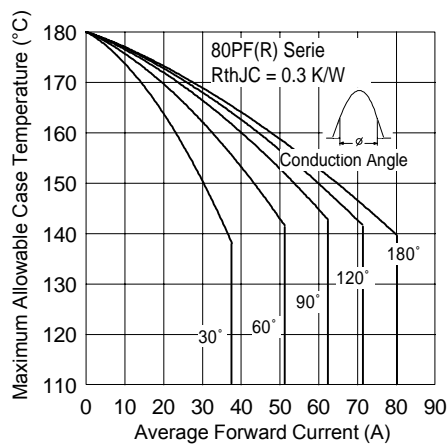


Fig. 1 - Current Ratings Characteristics

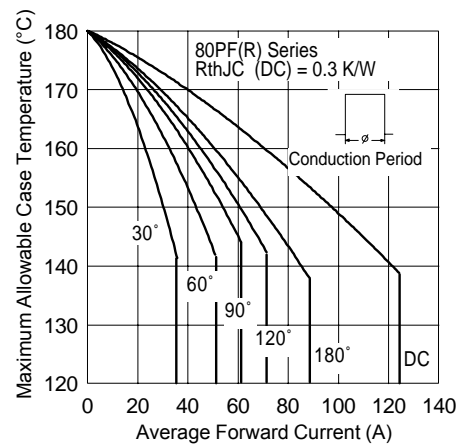


Fig. 2 - Current Ratings Characteristics

80PF(R)...(W) Series

Bulletin I20207 rev.C 03/04

International
IOR Rectifier

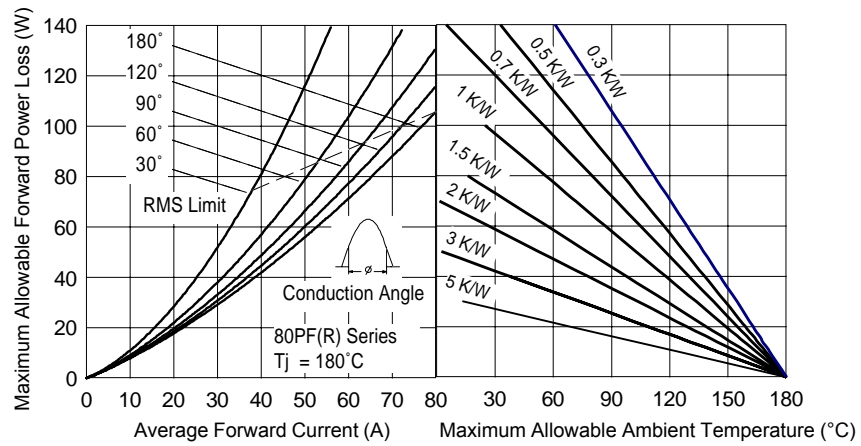


Fig. 3 - Forward Power Loss Characteristics

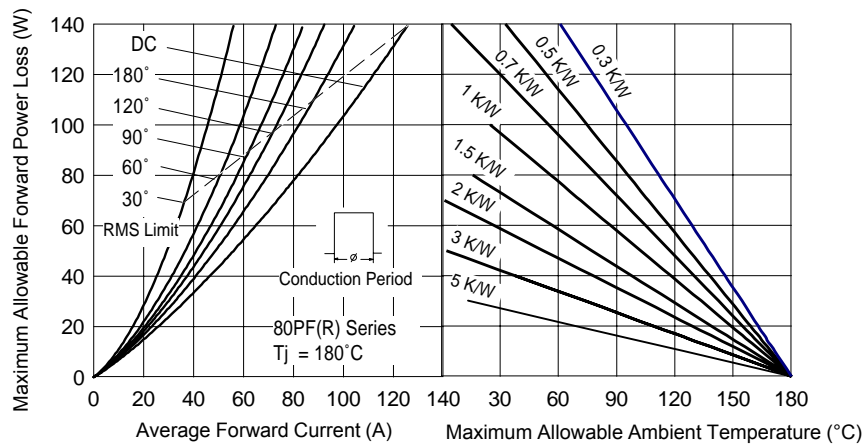


Fig. 4 - Forward Power Loss Characteristics

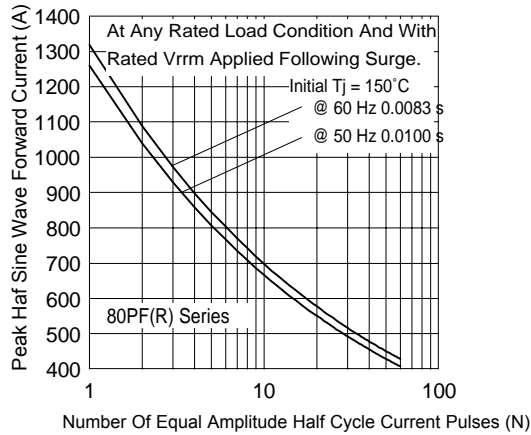


Fig. 5 - Maximum Non -Repetitive Surge Current

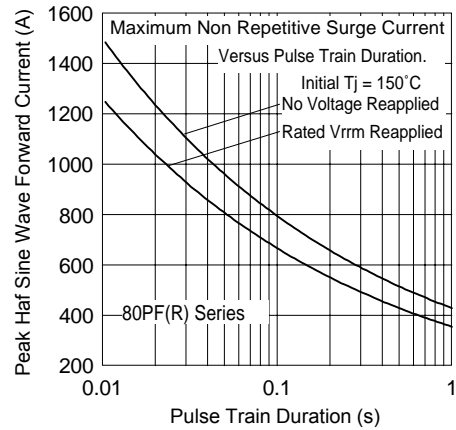


Fig. 6 - Maximum Non -Repetitive Surge Current

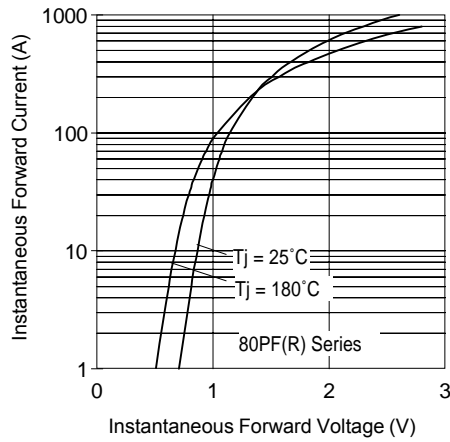


Fig. 7 - Forward Voltage Drop Characteristics

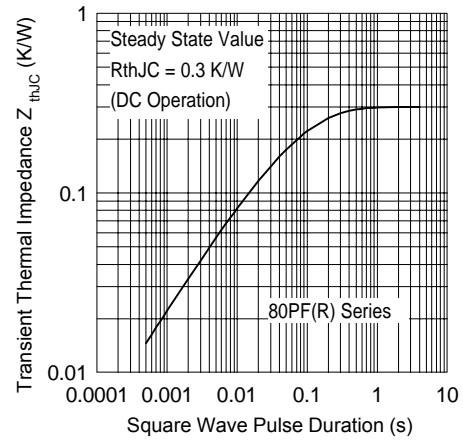


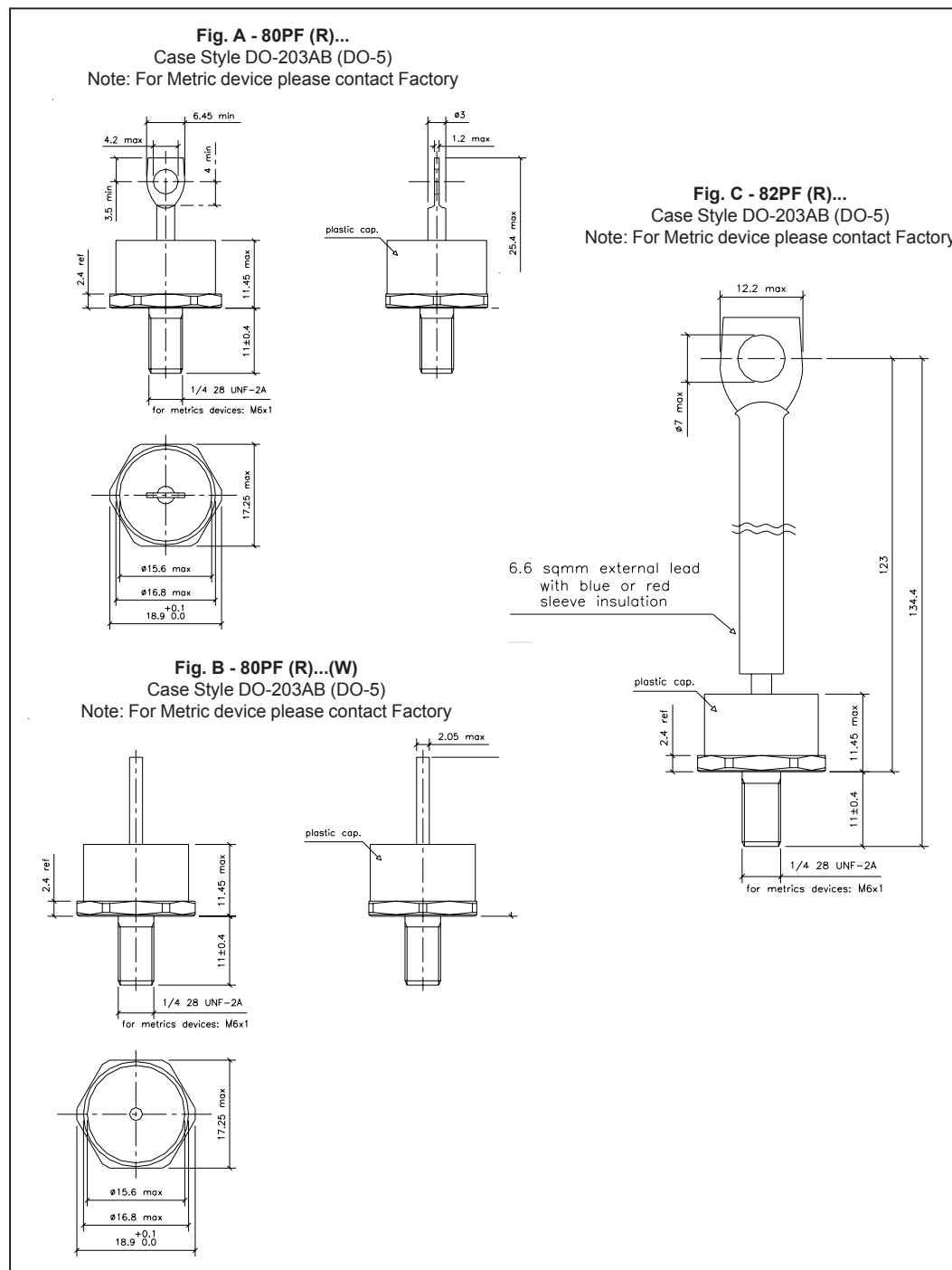
Fig. 8 - Thermal Impedance Z_{thJC} Characteristics

80PF(R)...(W) Series

Bulletin I20207 rev.C 03/04

International
IOR Rectifier

Outline Table



Ordering Information Table

Device Code				
	80	PF	R	120 W
	1	2	3	4 5
1	<ul style="list-style-type: none"> - 80 = Standard device - 82 = Isolated lead on standard terminal with silicone sleeve available for 1200V only (Red = Reverse Polarity) (Blue = Normal Polarity) 			
2	- PF = Plastic Package			
3	<ul style="list-style-type: none"> - None = Stud Normal Polarity (Cathode to Stud) - R = Stud Reverse Polarity (Anode to Stud) 			
4	- Voltage code: Code x 10 = V_{RRM} (See Voltage Ratings table)			
5	<ul style="list-style-type: none"> - None = Standard terminal (see Fig. A) - W = Wire terminal (see Fig. B) 			

Data and specifications subject to change without notice.
This product has been designed and qualified for Multiple Level.
Qualification Standards can be found on IR's Web site.

International
IOR Rectifier

IR WORLD HEADQUARTERS: 233 Kansas St., El Segundo, California 90245, USA Tel: (310) 252-7105
TAC Fax: (310) 252-7309
Visit us at www.irf.com for sales contact information. 03/04