

Ceramic Low Pass Filter

DC to 1800 MHz

NEW!
LFCN-1800



BLUE CELL™

CASE STYLE: FV1206

| Model | Price | Qty. |
|------------|--------|---------|
| LFCN-1800 | \$2.99 | (10-49) |
| LFCN-1800D | \$3.49 | (10-49) |

Maximum Ratings

| | |
|----------------------------|-------------------|
| Operating Temperature | -55°C to 100°C |
| Storage Temperature | -55°C to 100°C |
| RF Power Input* | 10W max. at 25°C |
| DC Current Input to Output | 0.5A max. at 25°C |

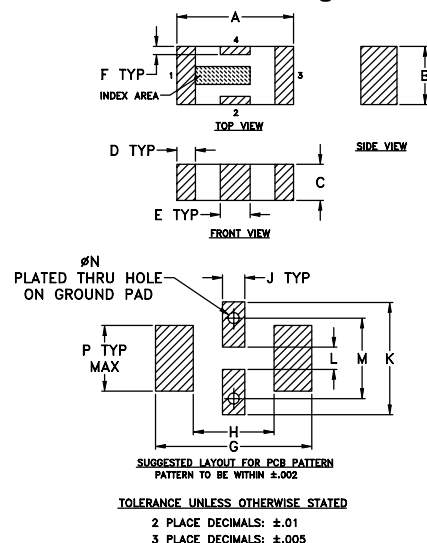
*Passband rating, derate linearly to 3.5W at 100°C ambient.

Pin Connections

| | |
|--------|-----|
| RF IN | 1** |
| RF OUT | 3** |
| GROUND | 2,4 |

**RF IN & RF OUT can be interchanged

Outline Drawing

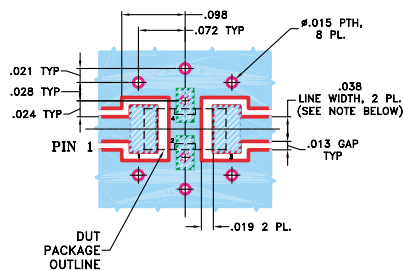


Outline Dimensions (inch)

| A | B | C | D | E | F | G |
|------|------|------|------|------|------|------|
| .126 | .063 | .037 | .020 | .032 | .009 | .169 |
| 3.20 | 1.60 | 0.94 | 0.51 | 0.81 | 0.23 | 4.29 |

| H | J | K | L | M | N | P | wt |
|------|------|------|------|------|------|------|-------|
| .087 | .024 | .122 | .024 | .087 | .012 | .071 | grams |
| 2.21 | 0.61 | 3.10 | 0.61 | 2.21 | 0.30 | 1.80 | .020 |

Demo Board MCL P/N: TB-270
Suggested PCB Layout (PL-137)



Features

- excellent power handling, 10W
- small size
- 7 sections
- temperature stable
- patent pending

Applications

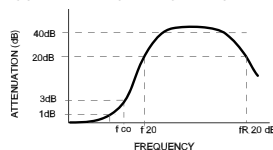
- harmonic rejection
- VHF/UHF transmitters/receivers
- lab use

Low Pass Filter Electrical Specifications¹ (T_{AMB}=25°C)

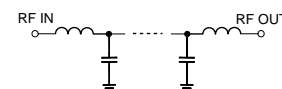
| MODEL NO. | PASSBAND (MHz) (loss < 1 dB) Max. | f _{co} , MHz Nom. (loss 3 dB) Typ. | STOP BAND (MHz) (loss, dB) | | | VSWR (:1) | | NO. OF SECTIONS |
|-----------|-----------------------------------------|------------------------------------------------------|-------------------------------|------------|---------------------------|------------------|------------------|-----------------|
| | | | f 20 Min. | 30 Typ. | f _r 20 Typ. | Stopband Typ. | Passband Typ. | |
| LFCN-1800 | DC-1800 | 2125 | 2425 | 2500-7200 | 8600 | 20 | 1.2 | 7 |

1. For Applications requiring DC voltage to be applied to the Input or output, use LFCN-1800D (DC Resistance to ground is 100 Mohms min.)

typical frequency response

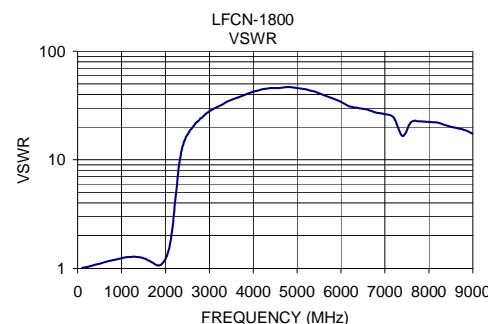
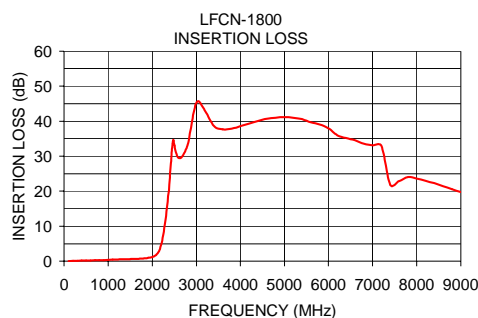


schematic



Typical Performance Data at 25°C

| Frequency (MHz) | Insertion Loss (dB) | VSWR (:1) |
|-----------------|---------------------|-----------|
| 100.00 | 0.07 | 1.01 |
| 500.00 | 0.21 | 1.11 |
| 1000.00 | 0.41 | 1.24 |
| 1500.00 | 0.62 | 1.24 |
| 1850.00 | 0.86 | 1.06 |
| 1875.00 | 0.90 | 1.07 |
| 2000.00 | 1.21 | 1.22 |
| 2125.00 | 2.29 | 1.88 |
| 2450.00 | 32.51 | 15.53 |
| 2500.00 | 33.42 | 17.05 |
| 4000.00 | 38.61 | 42.38 |
| 6000.00 | 37.95 | 34.07 |
| 7200.00 | 32.93 | 24.48 |
| 8800.00 | 20.55 | 18.90 |
| 9000.00 | 19.80 | 17.39 |



Mini-Circuits®

Distribution Centers NORTH AMERICA 800-654-7949 • 417-335-5935 • Fax 417-335-5945 • EUROPE 44-1252-832600 • Fax 44-1252-837010

Mini-Circuits ISO 9001 & ISO 14001 Certified

INTERNET <http://www.minicircuits.com>

P.O. Box 350166, Brooklyn, New York 11235-0003 (718) 934-4500 Fax (718) 332-4661

REV. B
M96263
LFCN-1800
ED-11960/4
AD/CP/AM
050113